



INSIGHTSIAS

SIMPLIFYING IAS EXAM PREPARATION

INSTA STATIC QUIZ

SIMPLIFYING IAS EXAM PREPARATION

JUNE 2022

Table of Contents

1. POLITY	2
2. GEOGRAPHY	6
3. ECONOMY	11
4. ART AND CULTURE.....	15
5. HISTORY.....	26
6. ENVIRONMENT	49



OGP 2023 Batch 5 in Bengaluru

Full-fledged Integrated Classroom Program for freshers

OGP - Offline & Online Guidance Program (GS+CSAT+ESSAY)

We have bagged spectacular results
with 180+ ranks in UPSC CSE 2021

OGP Excellence



PUSAPATI SAHITYA
AIR 24, CSE 2021



AVINASH V
AIR 31, CSE 2021



VAIBHAV RAWAT
AIR 25, CSE 2020



AKSHAY SIMHA
AIR 77, CSE 2020



JEYDEV
AIR 5, CSE 2019

SPECIAL FEATURES: Batch Starts from 25th July 2022

- Integrated coverage of Prelims & Mains syllabus
- Emphasis on Mains Answer Writing with Daily Class tests
- Weekly, fortnightly and full-length Prelims and Mains tests
- Personalized One-to-One Mentorship
- Complete Coverage of syllabus
- ETHICS, ESSAY & CSAT classes are also provided
- Free access to All India Prelims Test Series
- Ignite session & Lecture Series

Early Bird Offer :

10% Discount
till 15th July

5% Discount
till 20th July

Register Here:



Fee Structure:

Offline Classes :
1,25,000/-
incl. taxes

Online Classes :
1,10,000/-
incl. taxes



WWW.INSIGHTSONINDIA.COM



admissions@insightsias.com
support@insightsias.com

Bengaluru Office:

Nanda Ashirwad Complex, 3rd floor,
Above Village Hyper Market,
Dwaraka Nagar, Chandra layout Main
Road, Bengaluru - 560072.

Contact:

Bengaluru Office : 7483163074 / 9380863034
Hyderabad Office : 8688512637
Srinagar Office : 7006753211
Delhi Office : 9625668123/7303318519/011-495-2020-5

1. Polity

1) Consider the following statements regarding Election Commission of India.

1. Governor of a state is constitutionally bound to provide support staff to the Election commission, if required.
2. It conducts election to the office of Vice president of India.
3. An Election commissioner can be removed from his office without the recommendation of chief election commissioner.

Which of the above statements is/are correct?

- a) 2 only
- b) 1, 2
- c) 2, 3
- d) 1, 3

Solution: b)

The Election Commission of India is an autonomous constitutional authority responsible for administering Union and State election processes in India. The body administers elections to the Lok Sabha, Rajya Sabha, State Legislative Assemblies in India, and the offices of the President and **Vice President** in the country.

The chief election commissioner and the two other election commissioners have equal powers and receive equal salary, allowances and other perquisites, which are similar to those of a judge of the Supreme Court. In case of difference of opinion amongst the Chief Election Commissioner and/or two other selection commissioners, the matter is decided by the Commission by majority.

An **Election commissioner may be removed by the President on the advice of chief election commissioner.**

Governor of a state is constitutionally bound to provide support staff to the Election commission, if required.

2) Consider the following statements regarding the Preamble to the Constitution of India.

1. The expression 'Unity and Integrity of the Nation' is there in the preamble since the beginning of the Constitution.
2. Equality of Status and Equality of opportunity find mention in the preamble.

Which of the above statements is/are correct?

- a) 1 only
- b) 2 only
- c) Both 1 and 2
- d) Neither 1 nor 2

Solution: b)

PREAMBLE

WE, THE PEOPLE OF INDIA, having solemnly resolved to constitute India into a **SOVEREIGN SOCIALIST SECULAR DEMOCRATIC REPUBLIC** and to secure to all its citizens:

JUSTICE, social, economic and political; **LIBERTY** of thought, expression, belief, faith and worship;

EQUALITY of status and of opportunity;

and to promote among them all **FRATERNITY** assuring the dignity of the individual and the unity and integrity of the Nation;

IN OUR CONSTITUENT ASSEMBLY this twenty-sixth day of November, 1949, do **HEREBY ADOPT, ENACT AND GIVE TO OURSELVES THIS CONSTITUTION**

3) According to the Constitution of India, which of the following statements is/are correct?

1. A person, held office as the President of India, shall be eligible for election to that office for the second term.

2. The executive power of the Union shall be vested in the President of India.

3. The President of India is elected by an electoral college consisting of all members of Parliament and all members of all State Legislatures.

Select the correct answer code:

- a) 2 only
- b) 1, 2
- c) 2, 3
- d) 1, 3

Solution: b)

Article 57 provides that a person who holds, or who has held, office as president shall, subject to the other provisions of this constitution, be **eligible for re-election to that office**.

The new president is chosen by an electoral college consisting of the **elected members of both houses of parliament (M.P.s)**, the **elected members of the State Legislative Assemblies** (Vidhan Sabha) of all States and the elected members of the legislative assemblies (MLAs) of union territories with legislatures.

The executive power of the Union shall be vested in the President of India.

- 4) Which one of the following Fundamental rights was described by Dr. B. R. Ambedkar as ‘the heart and soul of the Constitution’?
- a) Right to equality
 - b) Right to freedom of Religion
 - c) Right to free speech and expression
 - d) Right to Constitutional remedies

Solution: d)

Article 32 confers the right to remedies for the enforcement of the fundamental rights of an aggrieved citizen. In other words, the right to get the Fundamental Rights protected is in itself a fundamental right. This makes the fundamental rights real.

That is why **Dr Ambedkar called Article 32 as the most important article of the Constitution— ‘an Article without which this constitution would be a nullity. It is the very soul of the Constitution and the very heart of it’**. The Supreme Court has ruled that Article 32 is a basic feature of the Constitution.

- 5) Which of the following actions of the government form(s) the part of implementation of Directive Principles of State Policy (DPSP)?
1. Maternity Benefit Act
 2. Bonded Labour System Abolition Act
 3. Abolition of intermediaries like Zamindars, Jagirdars, inamdars etc
 4. Nationalisation of Commercial Banks

Select the correct answer code:

- a) 1, 2
- b) 1, 2, 3
- c) 1, 2, 4
- d) 1, 2, 3, 4

Solution: d)

The Directive Principles of State Policy are enumerated in Part IV of the Constitution from Articles 36 to 51. The framers of the Constitution borrowed this idea from the Irish Constitution of 1937, which had copied it from the Spanish Constitution. Dr B R Ambedkar described these principles as ‘novel features’ of the Indian Constitution. The Directive Principles along with the Fundamental Rights contain the philosophy of the

Constitution and is the soul of the Constitution.

All the four legislations given above in the options are part of implementation of DPSPs.

6) Consider the following statements.

1. The Constitution of India forbid the legislature from discussing the conduct of any judge in the discharge of his duties.
2. According to Constitution of India, the validity of proceedings in Parliament and the Legislatures cannot be called into question in any Court.
3. In many of the judgements by the Courts in India, we see that constitutional morality has outweighed the argument of public morality.

Which of the above statements is/are correct?

- a) 1, 2
- b) 2, 3
- c) 1, 3
- d) 1, 2, 3

Solution: d)

The Constitution, under various provisions, has clearly drawn the line between Legislature and the Judiciary to maintain their independence in their respective functioning. **Article 121 and 211 forbid the legislature from discussing the conduct of any judge in the discharge of his duties**, while **Articles 122 and 212**, on the other hand, **prevent the courts from sitting in judgment over the internal proceedings of the legislature.**

Constitutional morality: An important case which employed this concept in an innovative manner was the Naz Foundation Case which used the concept of constitutional morality to strike down Section 377 of the Indian Penal Code and decriminalize homosexuality.

The Delhi High Court had said that "In our scheme of things, constitutional morality must outweigh the argument of public morality, even if it be the majoritarian view."

7) Which of the following articles of the Constitution of India requires the Prime minister of India to furnish information related to decisions of the Council of Ministers to the President of India?

- a) Article 74
- b) Article 75
- c) Article 78
- d) Article 81

Solution: c)

Article 78:

It shall be the duty of the Prime Minister —

(a) to **communicate to the President all decisions of the Council of Ministers relating to the administration of the affairs of the Union and proposals for legislation;**

(b) to furnish such information relating to the administration of the affairs of the Union and proposals for legislation as the President may call for; and

(c) if the President so requires, to submit for the consideration of the Council of Ministers any matter on which a decision has been taken by a Minister but which has not been considered by the Council.

8) Consider the following statements.

1. The President of India is bound to act as per the advice of the Council of Ministers.
2. The President of India appoints a person as Attorney General of India provided, he/she is qualified to be a judge of the Supreme court.

3. The total number of ministers in the council of ministers cannot exceed 10 percent of the total number of members of the House of people.
4. All executive actions of the Government of India are taken in the name of the President of India.

Which of the above statements is/are correct?

- a) 1, 3
- b) 1, 2, 4
- c) 1, 3, 4
- d) 1, 2, 3, 4

Solution: b)

There shall be a Council of Ministers with the Prime Minister at the head to aid and advise the President who shall, in the exercise of his functions, **act in accordance with such advice:** Provided that the President may require the council of Ministers to reconsider such advice, either generally or otherwise, and the **President shall act in accordance with the advice tendered after such reconsideration.**

The **Attorney General for India** is the Indian government's chief legal advisor, and is its principal Advocate before the Supreme Court of India. **They must be a person qualified to be appointed as a Judge of the Supreme Court.**

According to the Article 72 of the Indian Constitution, **the number of members in the Council Of Ministers should not exceed the 15 percent of the total number of members in the House of The People or The Parliament.**

All executive action of the Government of India shall be expressed to be **taken in the name of the President.**

- 9) Which of the following pairs of Schedules in the Constitution of India is not correctly matched?
- a) Second Schedule: Oath and affirmation for Union Ministers of India and State Ministers
 - b) Fourth Schedule: Allocation of seats for States and Union Territories in the Rajya Sabha
 - c) Seventh Schedule: Union, State and Concurrent List
 - c) Eighth Schedule: Official languages recognized by the Constitution of India

Solution: a)

Second Schedule of Indian Constitution:

The provisions in relation to allowances, privileges, emoluments of:

- President of India
- Governors of Indian States
- Speaker of Lok Sabha & Deputy Speaker of Lok Sabha
- Chairman of Rajya Sabha & Deputy Chairman of Rajya Sabha
- Speaker and Deputy Speaker of Legislative Assemblies of Indian States
- Chairman and Deputy Chairman of Legislative Councils of the Indian States
- Supreme Court Judges
- High Court Judges
- Comptroller & Auditor General of India (CAG)

10) Consider the following statements regarding Regulating Act, 1773

1. It prohibited the servants of the company from engaging in any private trade.
2. It made the governors of Bombay, Madras and Bengal presidencies independent of one another.
3. It introduced, for the first time, local representation in the Indian (Central) Legislative Council.
4. It provided for the establishment of a Supreme Court at Calcutta.

Which of the above statements is/are correct?

- a) 1, 2, 3
- b) 1, 3
- c) 1, 4
- d) 2, 3, 4

Solution: c)

Regulating Act of 1773 was the first step taken by the British Government to control and regulate the affairs of the East India Company in India.

Features of the Act

1. It designated the Governor of Bengal as the 'Governor-General of Bengal' and created an Executive Council of four members to assist him. The first such Governor-General was Lord Warren Hastings.
2. **It made the governors of Bombay and Madras presidencies subordinate to the governor general of Bengal, unlike earlier**, when the three presidencies were independent of one another.
3. **It provided for the establishment of a Supreme Court at Calcutta (1774)** comprising one chief justice and three other judges.
4. **It prohibited the servants of the Company from engaging in any private trade or accepting presents or bribes from the 'natives'**.
5. It strengthened the control of the British Government over the Company by requiring the Court of Directors (governing body of the Company) to report on its revenue, civil, and military affairs in India.

Charter Act of 1853 introduced, for the first time, local representation in the Indian (Central) Legislative Council.

2. Geography

1) Consider the following statements.

1. The gravitational force of the earth holds the atmosphere around it.
2. Earth's gravity is strong enough to hold onto its atmosphere.
3. Earth's atmosphere is about 1/100th as dense as Mars'.

Which of the above statements is/are correct?

- a) 1 only
- b) 1, 2
- c) 1, 3
- d) 2, 3

Solution: b)

The atmosphere is the thin layer of air that surrounds the earth. **The gravitational force of the earth holds the atmosphere around it.** It protects us from the harmful rays and scorching heat of the sun. It consists of a number of gases, dust and water vapour. The changes in the atmosphere produce changes in the weather and climate.

Earth's gravity is strong enough to hold onto its atmosphere. Mars, for example, is less than half Earth's size and around one-tenth Earth's mass. Less mass means less gravitational pull. **Mars' atmosphere is only about 1/100th as dense as Earth's.** And, by the way, it is mostly CO₂.

2) Acidification of ocean can have a beneficial effect on

1. Seagrasses
2. Photosynthetic algae
3. Deep sea corals

Select the correct answer code:

- a) 2 only
- b) 1, 2
- c) 1, 3

d) 1, 2, 3

Solution: b)

Ocean acidification is the ongoing decrease in the pH of the Earth's oceans, caused by the uptake of carbon dioxide (CO₂) from the atmosphere.

Ocean acidification is expected to impact ocean species to varying degrees. **Photosynthetic algae and seagrasses may benefit from higher CO₂ conditions in the ocean**, as they require CO₂ to live just like plants on land.

On the other hand, studies have shown that a more acidic environment has a dramatic effect on some calcifying species, including oysters, clams, sea urchins, shallow water corals, deep sea corals, and calcareous plankton.

3) Lithospheric plates move around very slowly – just a few millimetres each year. What is the reason behind this movement?

- Rotation of earth
- Movement of magma inside earth
- Ocean currents
- Formation of folds on earth's crust

Solution: b)

The lithosphere is broken into a number of plates known as the Lithospheric plates.

The molten magma inside the earth moves in a circular manner. These plates move because of the **movement of the molten magma inside the earth**.

4) The climate and weather of a region largely depends on

- Height above Mean Sea Level (MSL)
- Distance from equator
- Distance from International Date Line
- Proximity with major water bodies

Select the correct answer code:

- 1, 2, 3
- 1, 3, 4
- 1, 2, 4
- 1, 4

Solution: c)

- Places farther from equator are likely to have lesser rainfall and a colder climate.
- Altitude affects the temperature of a place. Places at higher Mean Sea Level (MSL) are more likely to be colder than those at lower MSL.
- Distance from International Date Line indirectly refers to the longitude of a place, which has no bearing on a place's weather or climate.**
- Places close to large lakes or sea are more likely to have moderate weather due to the blowing of land and sea breezes.

5) Consider the following statements regarding Chota Nagpur Plateau.

1. The Chota Nagpur plateau has been formed by continental uplift from forces acting deep inside the earth.

2. The Indo-Gangetic plain lies to the north and east of the Chota Nagpur plateau.

3. The Krishna River flows through Chota Nagpur Plateau.

Which of the above statements is/are correct?

- 1, 2
- 1, 3
- 2, 3
- 1, 2, 3

Solution: a)

The Chota Nagpur Plateau is a plateau in eastern India, which covers much of Jharkhand state as well as adjacent parts of Odisha, West Bengal and Chhattisgarh. **The Indo-Gangetic plain lies to the north and east of the plateau,** and the basin of the Mahanadi River lies to the south.

The Chota Nagpur Plateau is a continental plateau—an extensive area of land thrust above the general land. **The plateau has been formed by continental uplift from forces acting deep inside the earth.**

The Damodar River flows through Chota Nagpur Plateau.

6) Consider the following statements.

1. Density is lowest near the surface of the earth and increases with increasing altitude.
2. Thickness of the troposphere is greatest at the equator because heat is transported to great heights by strong convective currents.
3. One important feature of the stratosphere is that it contains the ozone layer.

Which of the above statements is/are correct?

- a) 2, 3
- b) 1, 2
- c) 3 only
- d) 1, 2, 3

Solution: a)

The atmosphere consists of **different layers with varying density and temperature. Density is highest near the surface of the earth and decreases with increasing altitude.**

Thickness of the troposphere is greatest at the equator because heat is transported to great heights by strong convective currents.

One **important feature of the stratosphere is that it contains the ozone layer.** This layer absorbs ultra-violet radiation and shields life on the earth from intense, harmful form of energy.

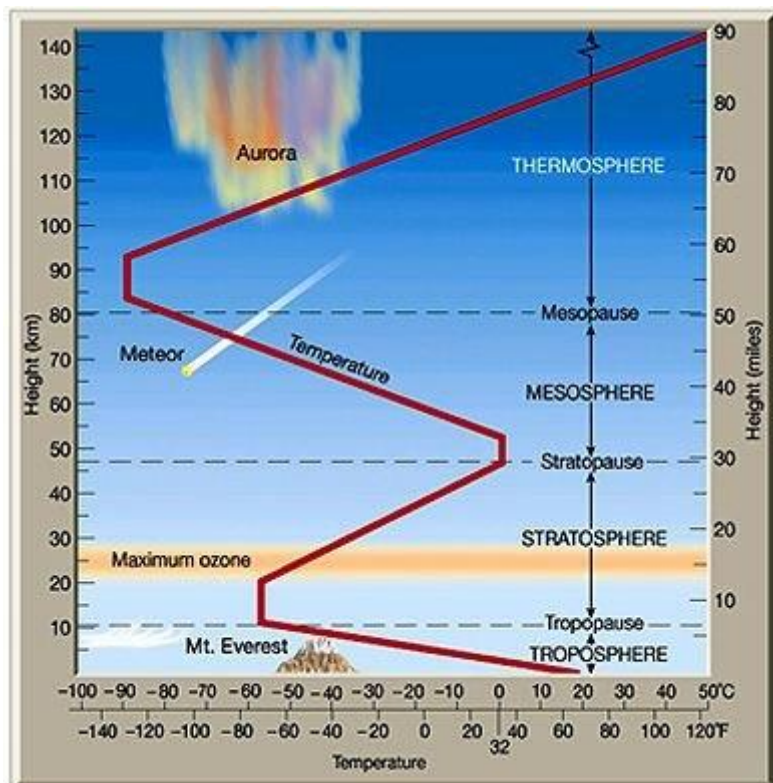
7) Consider the following statements.

1. In the Mesosphere, temperature starts increasing with the increase in altitude.
2. Radio waves transmitted from the earth are reflected back to the earth by ionosphere.
3. The International Space Station orbits in the thermosphere.

Which of the above statements is/are correct?

- a) 1, 2
- b) 2 only
- c) 2, 3
- d) 1, 3

Solution: c)



In the **Mesosphere temperature starts decreasing with the increase in altitude** and reaches up to minus 100° C at the height of 80 km.

Ionosphere:

- It contains electrically charged particles known as ions, and hence, it is known as ionosphere.
- **Radio waves transmitted from the earth are reflected back to the earth by this layer.**

The **International Space Station orbits in the thermosphere.**

8) Consider the following statements.

1. Tornadoes and cyclones do not co-exist.
2. Tornadoes are much smaller in scale than hurricanes.
3. The direction of rotation of a hurricane/cyclone is decided by the direction of earth’s rotation, which is not the case with tornadoes.

Which of the above statements is/are correct?

- a) 1, 2
- b) 1, 3
- c) 2 only
- d) 2, 3

Solution: c)

A tornado may form within a cyclone. A tornado forms due to the effect of low pressure in the eye of a cyclone.

Tornadoes and hurricanes appear to be similar in their general structure. Both are characterized by extremely strong horizontal winds swirling around the center, strong upward motion dominating the circulation with some downward motion in the center. **Hurricanes always rotate counter-clockwise in the northern hemisphere (clockwise in the southern), the direction of their rotation being determined by the Earth's rotation. This is almost always true of tornadoes too,** although on rare occasions "anticyclonic" tornadoes spinning in the opposite direction do occur.

The most obvious difference between tornadoes and hurricanes is that they have drastically different scales. They form under different circumstances and have different impacts on the environment. **Tornadoes are "small-scale circulations". Hurricanes, on the other hand, are large-scale circulations.**

9) Which of the following are the examples of Footloose industry?

1. Diamonds
2. Sugar industry
3. Computer chips
4. Aluminium industry

Select the correct answer code:

- a) 1, 2, 3
- b) 1, 3
- c) 1, 3, 4
- d) 2, 3, 4

Solution: b)

Footloose industry is a general term for an **industry that can be placed and located at any location without effect from factors of production such as resources, land, labour, and capital.**

These industries often have spatially fixed costs, which means that the costs of the products do not change despite where the product is assembled. **Diamonds, computer chips**, and mobile manufacturing are some examples of footloose industries. These are generally non-polluting industries.

Non-footloose industries generally require raw material availability within a time limit to make products. **Sugar industry**, jute industry and tea industry are the examples of non-footloose industries.

10) Arrange the following industrial towns of Chotanagpur plateau from north to south direction.

1. Ranchi
2. Dhanbad
3. Bokaro
4. Jamshedpur

Select the correct answer code:

- a) 3-2-4-1
- b) 2-3-1-4
- c) 2-3-4-1
- d) 3-2-1-4

Solution: b)

Co ordinates of:

Dhanbhad: 23.7957° N, 86.4304° E

Bokaro: 23.6693° N, 86.1511° E

Ranchi: 23.3441° N, 85.3096° E

Jamshedpur: 22.8046° N, 86.2029° E

3. Economy

- 1) Generally, the Government implements the policy of Disinvestment to
1. Reduce the financial burden on the Government
 2. Introduce competition and market discipline
 3. Encourage wider share of ownership
 4. Depoliticise non-essential services

Select the correct answer code:

- a) 1, 2, 3
- b) 1, 3, 4
- c) 2, 3, 4
- d) 1, 2, 3, 4

Solution: d)

Disinvestment can be defined as the action of an organisation (or government) selling or liquidating an asset or subsidiary. It is also referred to as 'divestment' or 'divestiture.'

In most contexts, disinvestment typically refers to sale from the government, partly or fully, of a government-owned enterprise.

The main objectives of disinvestment were:

- To **reduce the financial burden on the Government**
- To improve public finances
- To **introduce, competition and market discipline**
- To fund growth
- To **encourage wider share of ownership**
- To **depoliticise non-essential services**

INSIGHTSIAS
SIMPLIFYING IAS EXAM PREPARATION

- 2) The 'Primary Deficit' in the annual budget documents of the Government of India refer to
- a) Difference between budgetary deficit and capital deficit of the present financial year
 - b) Difference between revenue deficit of the current year and grants for capital creation
 - c) Difference between fiscal deficit of the current year and interest payments on the previous borrowings
 - d) Difference between revenue deficit of the present financial year and grants to states and local bodies

Solution: c)

Primary deficit refers to the **difference between the current year's fiscal deficit and interest payment on previous borrowings**. It indicates the borrowing requirements of the government, excluding interest. It also shows how much of the government's expenses, other than interest payment, can be met through borrowings.

Primary deficit indicates the amount of borrowing which the government needs excluding the interest component. Fiscal deficit, on the other hand, is the difference between the government's total expenditure and total income. In other words, primary deficit is the difference between the government's income-expenditure gap and its interest payment on previous borrowings.

- 3) Which of the following can become the part of the National Pension Scheme (NPS)?
1. Central government employees
 2. State government employees
 3. Armed forces Personnel
 4. Employees of unorganized sector

Select the correct answer code:

- a) 1, 2
- b) 1, 2, 3
- c) 1, 2, 4

d) 1, 2, 3, 4

Solution: c)

National Pension System (NPS) is a pension cum investment scheme launched by Government of India to provide old age security to Citizens of India.

NPS can be broadly classified into two categories and it is further customised for different sectors as mentioned below:

1. Government Sector:

a) **Central Government:** The Central Government had introduced the National Pension System (NPS) with effect from January 1, 2004 (**except for armed forces**). All the employees of Central Autonomous Bodies who have joined on or after the above mentioned date are also mandatorily covered under Government sector of NPS.

b) **State Government:** Subsequent to Central Government, various State Governments adopted this architecture and implemented NPS with effect from different dates.

2. Private Sector (Non-Government Sector):

a) Corporates: NPS Corporate Sector Model is the customized version of NPS to suit various organizations and their employees to adopt NPS as an organized entity within purview of their employer-employee relationship.

All Citizens of India:

Any individual not being covered by any of the above sectors has been allowed to join NPS architecture under the All Citizens of India sector from May 01, 2009.

4) Which of the following is/are the components of Capital Account of Balance of Payments?

1. Repayment of loans by foreigners
2. Investments by rest of the world in real estate in India.
3. Investments by Indian residents in shares of foreign companies

Select the correct answer code:

- a) 1, 2
- b) 1, 3
- c) 2, 3
- d) 1, 2, 3

Solution: d)

Capital account of BOP records all those transactions, between the residents of a country and the rest of the world, which cause a change in the assets or liabilities of the residents of the country or its government.

Components of Capital Account:

The main components of capital account are:

- Borrowings and landings to and from abroad: It includes:
 - All transactions relating to borrowings from abroad by private sector, government, etc. Receipts of such loans and **repayment of loans by foreigners** are recorded on the positive (credit) side.
 - All transactions of lending to abroad by private sector and government. Lending abroad and repayment of loans to abroad is recorded as negative or debit item.
- Investments to and from abroad: It includes:
 - **Investments by rest of the world in shares of Indian companies, real estate in India**, etc. Such investments from abroad are recorded on the positive (credit) side as they bring in foreign exchange.
 - **Investments by Indian residents in shares of foreign companies**, real estate abroad, etc. Such investments to abroad be recorded on the negative (debit) side as they lead to outflow of foreign exchange.

5) Which of the following is/are part of the Personal Disposable Income?

1. Corporate Tax.
2. Non-tax Payments such as fines
3. Personal Tax Payments.
4. Net Interest payments made by households

Select the correct answer code:

- a) 1, 2, 4
- b) 3 only
- c) 1, 2, 3, 4
- d) None of the above

Solution: d)

None of them are part of Personal Disposable Income.

In economics, personal income (PI) refers to an individual's total earnings from wages, investment enterprises, and other ventures. It is the sum of all the incomes received by all the individuals or household during a given period.

If we deduct the Personal Tax Payments (income tax, for example) and Non-tax Payments (such as fines) from PI, we obtain what is known as the Personal Disposable Income.

Personal Disposable Income (PDI) \equiv PI – Personal tax payments – Non-tax payments.

6) Consider the following statements.

1. The domestic company isn't required to pay dividend distribution tax on any amount declared, distributed or paid by such company by way of dividend.
2. Dividend received from domestic company is taxable in hands of shareholders.
3. Dividend income is considered as income from other sources and investors will have to pay tax on it as per their individual tax slabs.

Which of the above statements is/are correct?

- a) 1, 2
- b) 1, 3
- c) 2, 3
- d) 1, 2, 3

Solution: d)

- W.e.f., Assessment Year 2021-22, the **domestic company isn't required to pay dividend distribution tax on any amount declared, distributed or paid by such company by way of dividend.**
- **Dividend received from domestic company is taxable in hands of shareholders.**
- Now mutual fund dividends have been made taxable in the hands of investors. Now dividend income will be **considered as income from other sources and investors will have to pay tax on it as per their individual tax slabs.** Hence the benefit or loss owing to mutual fund dividend tax as compared to the previous regime of DDT tax will depend on the investor's tax slab.

Source

Source

7) Consider the following statements regarding External Debt.

1. India's external debt to GDP ratio is more than 40 percent.
2. Commercial borrowings constitute the largest component of India's external debt.
3. US dollar denominated debt constitute the largest component of India's external debt, followed by debt denominated in the Indian rupee.

Which of the above statements is/are correct?

- a) 1, 2
- b) 2 only

- c) 2, 3
- d) 1, 3

Solution: c)

The major developments relating to India's external debt as at end-June 2021.

- The external debt to GDP ratio declined to **20.2 per cent at end-June 2021 from 21.1 per cent** at end-March 2021.
- **Long-term borrowings (more than a year to maturity) dominate** India's external debt.
- **Commercial borrowings remained the largest component of external debt**, with a share of 37.4 per cent, followed by non-resident deposits (24.8 per cent) and short-term trade credit (17.4 per cent).
- **US dollar denominated debt remained the largest component of India's external debt**, with a share of 52.4 per cent at end-June 2021, **followed by debt denominated in the Indian rupee** (33.2 per cent), yen (5.8 per cent), SDR (4.4 per cent) and the euro (3.4 per cent).

- 8) Aggregate demand in the economy can be increased by
1. Increasing the public investment
 2. Increasing tax rate on personal income
 3. Lowering interest rates on consumer loans

Select the correct answer code:

- a) 1, 2
- b) 1, 3
- c) 2, 3
- d) 1, 2, 3

Solution: b)

Aggregate demand is the total demand for final goods and services in an economy at a given time.

Increasing the investments and lowering interest rate on consumer loans increases the disposable income and thus creates demand. However, increasing the tax rate on personal income leads to decrease in disposable income. Thus, reduces the aggregate demand.

- 9) Consider the following statements regarding GDP deflator.
1. GDP deflator is a measure of the level of prices of all new, domestically produced, final goods and services in an economy in a year.
 2. Unlike the CPI, the GDP deflator is based on a fixed basket of goods and services.
 3. When GDP deflator is negative, it necessarily means that there is inflation in the economy.

Which of the above statements is/are correct?

- a) 1, 3
- b) 2, 3
- c) 1 only
- d) 1, 2

Solution: c)

In economics, **the GDP deflator is a measure of the level of prices of all new, domestically produced, final goods and services in an economy in a year.**

Like the consumer price index (CPI), the GDP deflator is a measure of price inflation/deflation with respect to a specific base year.

The GDP deflator is a more comprehensive inflation measure than the CPI index because it isn't based on a fixed basket of goods.

When GDP deflator is negative, nominal GDP is less than real DP. It means that there is deflation in the economy.

10) With reference to the government expenditure in India, which of the following constitutes Transfer Payments?

1. The payments which are made as financial aid in a social welfare programme.
2. The Interest payments made to foreign countries on loans taken.
3. The payments which are made by the government to its employees.

Select the correct answer code:

- a) 1 only
- b) 1, 3
- c) 2 only
- d) 2, 3

Solution: a)

In macroeconomics and finance, a **transfer payment is a redistribution of income and wealth by means of the government making a payment, without goods or services being received in return.** These payments are considered to be non-exhaustive because they do not directly absorb resources or create output. Examples of transfer payments include **welfare, financial aid, social security, and government subsidies for certain businesses.**

4. Art and Culture

1) Consider the following statements regarding Arthashastra.

1. This book in Sanskrit was written by Kautilya.
2. The manuscript of Arthashastra was first discovered by James Prinsep.
3. It is the most important literary source of the Mauryan history.

Which of the above statements is/are correct?

- a) 1, 2
- b) 1, 3
- c) 2, 3
- d) 1, 2, 3

Solution: b)

Kautilya's Arthashastra

This book in Sanskrit was written by Kautilya, a contemporary of Chandragupta Maurya. Kautilya was also called 'Indian Machiavelli'. The manuscript of Arthashastra was first discovered by R. Shama Sastri in 1904.

The Arthashastra contains 15 books and 180 chapters but it can be divided into three parts: the first deals with the king and his council and the departments of government; the second with civil and criminal law; and the third with diplomacy and war. **It is the most important literary source for the history of the Mauryas.**

2) Jugalbandhi is one of the main attractions in

- a) Sattriya
- b) Manipuri
- c) Kathak
- d) Kathakali

Solution: c)

Jugalbandi is the main attraction of **kathak** recital which shows a **competitive play between the dancer and the table player.**

- 3) The Natya Shashtra is a notable ancient treatise influencing dance, music and literary traditions in India. It is notable for its aesthetic "Rasa theory". The Rasa theory state that
- Performance of arts is intended purely for entertainment.
 - Pleasure and happiness are the foundations of a human's life.
 - The primary goal of ragas in music is to give it a natural flavour, one that appeals to all creatures and not only human beings.
 - Performance of arts is a tool to raise individual consciousness for spiritual upliftment.

Solution: d)

It asserts that **entertainment is a desired effect of performance arts but not the primary goal**, and that the primary goal is to transport the individual in the audience into another parallel reality, full of wonder, where he experiences the essence of his own consciousness, and reflects on spiritual and moral questions.

This is similar to the Sufi's views on music, chanting and its spiritual potential to connect with the divine.

- 4) Consider the following statements regarding Koodiyattam.
- It is one of the oldest traditional theatre forms of Tamil Nadu.
 - It is based on Sanskrit theatre traditions.
 - It is officially recognized by UNESCO as a Masterpiece of the Oral and Intangible Heritage of Humanity.

Which of the above statements is/are correct?

- 1, 2
- 2, 3
- 1, 3
- 1, 2, 3

Solution: b)

Koodiyattam is a **traditional performing art form in the state of Kerala**. It is a combination of **ancient Sanskrit theatre** with elements of Koothu, an ancient performing art from the Sangam era. It is **officially recognised by UNESCO as a Masterpiece of the Oral and Intangible Heritage of Humanity**.

- 5) Consider the following statements regarding Kathputli.
- It is the string puppets of Rajasthan.
 - Carved from a single piece of wood, these puppets are like large dolls that are colourfully dressed.
 - Oval faces, large eyes, arched eyebrows and large lips are some of the facial features of these puppets.
 - These puppets wear long trailing skirts and do not have legs.

Which of the above statements is/are correct?

- 1, 2, 3
- 2, 3, 4
- 2, 3
- 1, 2, 3, 4

Solution: d)

The traditional marionettes of Rajasthan are known as Kathputli. Carved from a single piece of wood, these puppets are like large dolls that are colourfully dressed. Their costumes and headgears are designed in the medieval Rajasthani style of dress, which is prevalent even today. The Kathputli **is accompanied by a highly dramatised version of the regional music**. **Oval faces, large eyes, arched eyebrows and large lips are some of the distinct facial features of these string puppets**. **These puppets wear long trailing skirts and do not have legs**. Puppeteers manipulate them with two to five strings which are normally tied to their fingers and not to a prop or a support.

- 6) Consider the following statements regarding Prehistoric painting.

1. There are evidences of Lower Paleolithic people producing art.
2. Symbols do not form part of Prehistoric paintings.
3. Hunting scenes predominate in Mesolithic paintings.

Which of the above statements is/are incorrect?

- a) 2 only
- b) 1, 2
- c) 3 only
- d) 1, 3

Solution: b)

We have **no evidences of lower Paleolithic people producing art** it is only during Upper Paleolithic that the production of art begins.

The paintings can be divided into three categories: human beings, animals and **geometric patterns**.

The largest number of paintings belongs to Mesolithic age.

Hunting scenes predominate in Mesolithic paintings.

- 7) The terms ramanas, padas and sabdas are related to
 - a) Various ragas of Carnatic music
 - b) Musical instruments
 - c) Literary forms
 - d) Form of Folk music

Solution: c)

Kabir's compositions can be classified into three **literary forms** – dohas (short two liners), **ramanas** (rhymed 4 liners), sung compositions of varying length, known as **padas** (verses) and **sabdas** (words).

- 8) Kathi Samu is an ancient Indian martial art originated in the state of
 - a) Maharashtra
 - b) Punjab
 - c) Manipur
 - d) Andhra Pradesh

Solution: d)

Kathi Samu is an ancient and historical martial art which originated in Andhra Pradesh. Kathi basically means sword and Kathi Samu is a martial art which is fighting with swords. Kathi Samu is an ancient skill which was mastered by the royal armies of Andhra Pradesh.



- 9) Consider the following pairs

Folk Dance	Related Community
1. Hozagiri Dance	Reang community

2. Bijhu Dance Chakma community
 3. Cheraw Dance Lusai community

Which of the above pairs is/are correctly matched?

- a) 1 only
 b) 1, 2
 c) 1, 3
 d) 1, 2, 3

Solution: d)

The main folk dances of Tripura are –

- **Hozagiri dance of Reang community,**
- **Bijhu dance of Chakma community,**
- **Cheraw dance of Lusai community**
- Wangala dance of Garo Community,

Each community has its own traditional musical instruments. To name a few are – 'Khamb (Drum)', Bamboo flute, 'Lebang', 'Sarinda', 'Do- Tara', and 'Khengrong', etc.

10) The book Panchasiddhantika was written by

- a) Nagarjuna
 b) Varahamihira
 c) Chanakya
 d) Aryabhata

Solution: b)

Varahamihira was a great astronomer who has written a number of books on astronomy. His work Panchasiddhantika deals with **five astronomical systems**.

11) Which of the following is/are major Buddhist sites in the Indian subcontinent which were either associated with Buddha's life or contain major Buddhist inscriptions/sculptures/viharas/caves?

1. Amaravati
2. Karle
3. Junnar
4. Nagarjunakonda

Select the correct answer code:

- a) 1, 2
 b) 1, 2, 3
 c) 2, 3, 4
 d) 1, 2, 3, 4

Solution: d)

Amaravati and Nagarjunakonda are prominent historic Buddhist sites. Junnar and Karle caves represent Buddhist caves.

12) Which of the following were some of the chief characteristics of the Vijayanagara temple architecture?

1. Tall gopurams
2. Kalyanamandapam with pillars
3. Absence of sculptures on pillars

Select the correct answer code:

- a) 1, 2
 b) 1 only
 c) 2, 3

d) 1, 2, 3

Solution: a)

Large temples have tall Rayagopuram built with wood, brick and stucco in Chola style. The term Raya is added to indicate a gopura built by Vijayanagar Rayas.

We can find ornate pillared Kalyanamantapa in Cheluva Narayana temple, Melkote

Temple pillars often have engravings of charging horses or hippogryphs (Yali) — horses standing on hind legs with their fore legs lifted and riders on their backs.

13) Consider the following statements regarding Mahayana Buddhism.

1. The Mahayana followers oppose idol or image worship of Buddha.
2. The concept of Bodhisattva is the result of Mahayana Buddhism.
3. The Mahayana scholars predominantly used Sanskrit as a language.
4. Emperor Ashoka patronised Mahayana school.

Which of the above statements is/are correct?

- a) 1, 2, 3
- b) 2, 3
- d) 2, 3, 4
- d) 1, 3, 4

Solution: b)

Mahayana Buddhism:

- It means the **greater vehicle**.
- The school is more liberal and believes in the heavenliness of Buddha and **Bodhisattvas** embodying Buddha Nature. The ultimate goal under Mahayana is “spiritual upliftment”.
- The Mahayana followers **believe in idol or image worship** of Buddha.
- The concept of **Bodhisattva** is the result of Mahayana Buddhism. Mahayana is also called “**Bodhisattvayana**”, or the “**Bodhisattva Vehicle**. That is to say, the followers believe in Bodhisattva concept of salvation of all conscious individual.
- In other words, **they believe in universal liberation from suffering of all beings**.
- A bodhisattva seeks complete enlightenment for the benefit of all beings. A bodhisattva who has accomplished this goal is called a **Samyaksambuddha**.
- Prominent Mahayana texts include **Lotus Sutra, Mahavamsa**, etc.
- The Mahayana scholars predominantly used **Sanskrit** as a language.

Emperor Ashoka patronised **Hinayana sect** as Mahayana school came into being much later.

14) Consider the following statements regarding sects of Jainism.

1. Bispanthi and Terapanthi are sub sects under Svetambara School.
2. Terapanthi pray to saints rather than to an idol in a temple.
3. Sthanakavasi is a sub sect under Digambara School.

Which of the above statements is/are correct?

- a) 1, 2
- b) 2 only
- c) 2, 3
- d) 1, 2, 3

Solution: b)

Svetambara School: Its three sub-sects include:

- **Sthanakavasi:** They believe in praying to Saints rather than to an idol in a temple. The saints wear a muhapatti near their mouth to cover it unlike Murtipujakas.
- **Murtipujaka (Deravasi):** They keep idols of the tirthankaras at their temples and worship them and the saints do not wear a muhapatti.
- **Terapanthi:** They pray to saints rather than to an idol in a temple, like Sthanakavasi. Terapanthi saints also wear a muhapatti near their mouth to cover it.

Digambara School: It has two major sub sects:

- **MulaSangh: the original community**
- **Bispanthi, Terapanthi and Taranpanthi: the modern Community**

15) Consider the following statements regarding Charvaka School of Philosophy/ Lokayata School of Philosophy.

1. Brihaspati laid the foundation stone for Charvaka School of Philosophy.
2. According to this philosophy, Man is the centre of all activities and he should enjoy himself as long as he lives.
3. It argued for a complete disregard of any world beyond this world that was inhabited by a person.

Which of the above statements is/are correct?

- a) 1, 2
- b) 2 only
- c) 2, 3
- d) 1, 2, 3

Solution: c)

Brihaspati laid the foundation stone for Charvaka School of Philosophy and it was supposed to be one of the earliest schools that developed a philosophical theory.

The word 'Lokayata' also meant a keen attachment to the physical and material world (loka).

They argued for a complete disregard of any world beyond this world that was inhabited by a person.

They argued against Gods and their representatives on the earth – the priestly class. They argued that a Brahman manufactures false rituals so as to acquire gifts (dakshina) from the followers.

Man is the centre of all activities and he should enjoy himself as long as he lives. He should consume all earthly goods and indulge in sensual pleasure.

16) Consider the following statements regarding Akbar Nama.

1. Akbar Nama is a three-volume history written by Abdul Fazl.
2. Ain-i-Akbari, the first volume deals with Akbar's administration.
3. Second volume deals with Akbar's ancestors.

Which of the above statements is/are correct?

- a) 1 only
- b) 1, 2
- c) 1, 3
- d) 2, 3

Solution: a)

- Akbar ordered one of his close friends and courtiers, Abul Fazl, to write a history of his reign. **Abul Fazl wrote a three volume history of Akbar's reign titled, Akbar Nama.**
- **The first volume dealt with Akbar's ancestors** and the second volume recorded the events of Akbar's reign.
- **The third volume is the Ain-I Akbari. It deals with Akbar's administration,** household, army, the revenues and geography of his empire. It also provides rich details about the traditions and culture of the people living in India.

- The most interesting aspect about the Ain-i Akbari is its rich statistical details about things as diverse as crops, yields, prices, wages and revenues.

17) Which of the following statements regarding Amukthamalyada is correct?

- Segment of Arthashashtra that became popular for its dictats on foreign policy
- Story of a Pallava ruler who sacrificed his kingdom to win back his subjects
- Long poem in Telugu by Krishnadevaraya in which he explains how a King should be
- Account of the ruling history of the Mauryas written by Chandragupta Maurya himself

Solution: c)

Amukthamalyada describes the story of wedding of the Hindu Lord Vishnu and Andal the Tamil Alvar poet and daughter of Periyalvar, at Srirangam.

- It is basically an epic **poem in Telugu composed by Krishnadevaraya** of the Vijayanagara dynasty.
- Krishnadevaraya was a great patron of arts and a great scholar himself.

18) At places like Tekkalkota in Karnataka and Andhra Pradesh, rock paintings from Neolithic age are often found. Which of the following can be the appropriate reason for it?

- Paintings existed in other regions too, but these regions were one of the most excavated regions which made it easier to find rock paintings.
- There were lack of deep caves, so rock paintings became abundant.
- Granite rocks found in Karnataka and Andhra Pradesh are suitable for rock paintings.
- None of the above

Solution: c)

- **The granite rocks of Karnataka and Andhra Pradesh provided suitable canvases to the Neolithic man for his paintings.**
- There are several such sites but more famous among them are Kupgallu, Piklihal and Tekkalkota.
- Three types of paintings have been reported from here– paintings in white, paintings in red ochre over a white background and paintings in red ochre.

19) Consider the following statements regarding the paintings found at Ajanta Caves?

- The themes of the paintings are the events from the life of the Buddha,
- Figures in these caves are painted with over-stylisation, with less importance to naturalism.
- The other important paintings are the famous Padmapani and Vajrapani.

Which of the above statements is/are correct?

- 1, 2
- 1, 3
- 2, 3
- 1, 2, 3

Solution: b)

The themes of the paintings are the events from the life of the Buddha, the Jatakas and the Avadanas. Some paintings such as Simhala Avadana, Mahajanaka Jataka and Vidhurpundita Jataka cover the entire wall of the cave.

The other important paintings are the famous Padmapani and Vajrapani. Figures in these caves are painted with considerable naturalism and there is no over-stylisation.

20) Consider the following statements regarding Warli painting.

- Warli painting derives its name from a small tribe inhabiting the remote, tribal regions of Maharashtra.
- These paintings are made mostly by the women as part of their routine at auspicious celebrations.

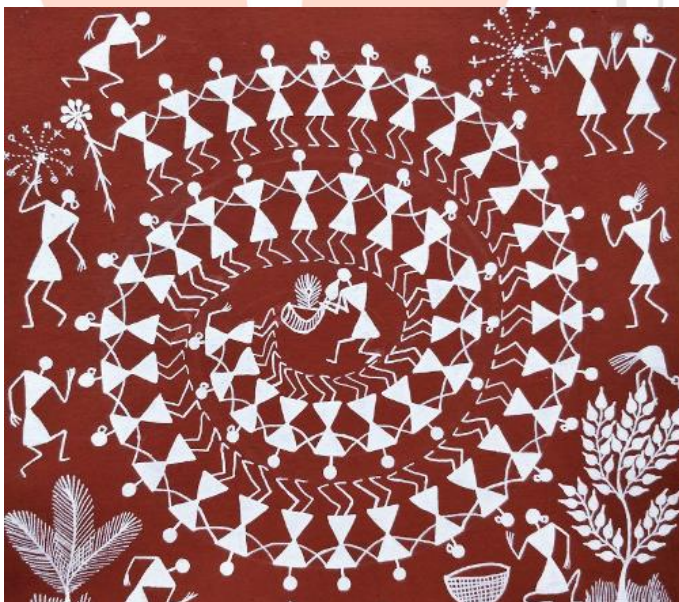
3. Marriage is the most recurring theme of Warli paintings.

Which of the above statements is/are correct?

- a) 1, 2
- b) 1, 3
- c) 2, 3
- d) 1, 2, 3

Solution: d)

- **Warli painting derives its name from a small tribe inhabiting the remote, tribal regions of Maharashtra.**
- These are decorative paintings on floors and walls of 'gond' and 'kol' tribes' homes and places of worship. Trees, birds, men and women collaborate to create a composite whole in a Warli painting.
- **These paintings are made mostly by the women as part of their routine at auspicious celebrations.**
- Subjects are drawn with simple and local materials like white colour and rice paste and local vegetable glue on a plain contrasting background, made in a geometric pattern like squares, triangles and circles.
- Dots and crooked lines are the units of these compositions. Flora and fauna and people's day-to-day life also form a part of the painting.
- The paintings are expanded by adding subject after subject in a spiralling manner. The rhythm of the Warli way of life is beautifully captured in simple images.
- **Marriage is the most recurring theme of Warli paintings.**
- Men and women dancing in circles (Tarapa Dance), during various celebrations, is another theme typical to the Warli paintings.
- A musician playing a native instrument is usually found in the middle of such spirals (Tarapa). Flora and fauna are also depicted in these paintings.



21) In literature, the first references to dance and music in India can be found in

- a) Natyashastra
- b) Natyadharmi
- c) Vedas
- d) Nandikesvara

Solution: c)

The first references to dance come from the Vedas where dance and music have their roots. The history of dance can be reconstructed from the epics, several Puranas and rich body of dramatic and poetic literature known as the nataka and the kavya in Sanskrit.

- 22) Bharatanatyam dance is known as ekaharya, which implies
- Bharatanatyam leans heavily on the abhinaya or mime aspect of dance
 - Bharatanatyam is accompanied by musical syllables with a few lines of sahitya.
 - Bharatanatyam performance always ends with a tillana
 - Bharatanatyam dancer takes on many roles in a single performance

Solution: d)

Bharatnatyam dance is known to be ekaharya, where **one dancer takes on many roles in a single performance.**

- 23) Consider the following statements regarding Kathakali.
- Kathakali is the oldest dance form that is recognized as a classical dance in India.
 - The body movement styles in Kathakali are borrowed from early martial arts of Kerala.
 - The characters in a Kathakali performance are broadly divided into Satvika, Rajasika and Tamasika types.

Which of the above statements is/are correct?

- 1 only
- 2, 3
- 1, 2
- 1, 3

Solution: b)

Kathakali is considered to be of comparatively recent origin.

However, the art has evolved from many social and religious theatrical forms which existed in the southern region in ancient times.

Kathakali is indebted to the early martial arts of Kerala for body movements and choreographical patterns.

Koodiyattam, Chakiarkoothu, Krishnattam and Ramanattam are few ritual performing arts of Kerala which have had a direct influence on Kathakali in its form and technique.

The characters in a Kathakali performance are broadly divided into Satvika, Rajasika and Tamasika types. These are the gunas or the flavours of dance that help present different faces and emotions.

- 24) Sattriya is a classical dance form of India. What does the word 'Sattras' mean?
- Spiritual Ragas
 - Sutras of dance
 - Seven ways of divine movement
 - Vaishnava maths or monasteries

Solution: d)

Mahapurusha Sankaradeva, a great Vaishnava saint and reformer of Assam introduced the Sattriya dance form in the 15th century AD as a powerful medium for propagation of the Vaishnava faith.

Later on the dance form evolved and expanded as a distinctive style of dance. For centuries, the **Sattras i.e., Vaishnava maths or monasteries** nurtured and preserved with this neo-Vaishnava treasure of Assamese dance and drama. This dance style has been aptly named Sattriya because of its religious character and association with the Sattras.

- 25) Consider the following statements regarding Giddha, Ghoomar and Garba.
- All three are folk dances
 - All three dances are primarily performed by women.

3. All the three dances mainly belong to Rajasthan.

Which of the above statements is/are correct?

- a) 1 only
- b) 1, 2
- c) 1, 3
- d) 2, 3

Solution: a)

All three are folk dances

Garba is performed equally by both men and women. Other two dances are primarily performed by women.

Ghoomar is a traditional folk dance of Rajasthan.

Giddha is a popular folk *dance* of Punjab.

Garba is a form of *dance* which originates from the state of Gujarat.

26) The earliest reference to the art of puppetry is found in

- a) Natyashastra
- b) Sama veda
- c) Shakuntalam
- d) Silappadikaaram

Solution: d)

The earliest reference to the art of puppetry is found in Tamil classic '**Silappadikaaram**' written around the 1st or 2nd century B.C.

27) Consider the following statements regarding Indian Puppetry.

1. Puppets were present at excavation sites at Harappa and Mohenjodaro.
2. Bommalattam and Yampuri are examples of string puppet.
3. Gombeyatta has influence of Yakshagana theatre of Karnataka.

Which of the above statements is/are correct?

- a) 1, 2
- b) 1, 3
- c) 2, 3
- d) 1, 2, 3

Solution: b)

The excavation sites at Harappa and Mohenjo-daro have yielded puppets with sockets attached to them, which suggest the presence of puppetry as an art form.

Bommalattam is a String puppet and Yampuri is a rod puppet.

Gombeyatta -- Karnataka: It has influence of Yakshagana theatre of Karnataka.

28) 'Togalu Gombeyaata' is a form of

- a) Water puppetry from South India
- b) Rod puppetry practised in the state of Odisha
- c) Shadow puppetry that depict mythological tales
- d) None of the above

Solution: c)

Togalu gombeyaata is a puppet show unique to the state of Karnataka. Togalu gombeyaata translates to "a play of leather dolls" in the native language of Kannada. It is a form of shadow puppetry. The puppets are usually characters from the **Hindu epics, the Ramayana and Mahabharata.**



29) Consider the following pairs:

Puppetry

1. Ravanchhaya
2. Yampuri
3. Pavakoothu
4. Tholu bommalata

State

- Rajasthan
- Bihar
- Kerala
- Andhra Pradesh

Which of the above pairs are incorrectly matched?

- a) 1, 2, 4
- b) 3 only
- c) 2, 3
- d) 2, 3, 4

Solution: d)



Ravanchhaya – shadow puppetry of **Odisha** region. The puppets are made of deer skin and depict bold, dramatic postures. They do not have any joints attached to them, making it a more complex art.

Yampuri – It is the traditional rod puppet of **Bihar**. The puppets are generally made of wood and are without any joints.

In **Kerala**, the traditional glove puppet play is called **Pavakoothu**. It came into existence during the 18th century due to the influence of Kathakali.

Tholu bommalata is the shadow puppet theatre tradition of the state of **Andhra Pradesh**.

30) Consider the following statements regarding Kathputli.

1. These are the traditional string instruments of Bihar and Jharkhand
2. It is controlled by a single string that passes from the top of the puppet over the puppeteers.

Which of the above statements is/are correct?

- a) 1 only
- b) 2 only
- c) Both 1 and 2
- d) Neither 1 nor 2

Solution: b)

Kathputli: The traditional string puppets of the **Rajasthan** area known as Kathputli, which derives its name from 'kath' meaning wood and 'putli' meaning doll. A unique feature of the puppets is the **absence of legs**. The strings are attached to the finger of the puppeteer.



5. History

1) Consider the following statements regarding Ancient Indian history.

1. Takshila and Varanasi emerged as centres of medicine and learning.
2. Charak Samhita and Sushrut Samhita are the important texts in the field of medicine.
3. The people of the vedic period were aware of fermenting grain, tanning leather and the process of

dyeing.

Which of the above statements is/are correct?

- a) 1, 2
- b) 1, 3
- c) 2, 3
- d) 1, 2, 3

Solution: d)

Medicine: From 600 BC began the period of rational sciences. **Takshila and Varanasi emerged as centres of medicine and learning.** The two important texts in this field are **Charak Samhita by Charak and Sushrut Samhita by Sushruta.**

Metallurgy: The vedic people were aware of **fermenting grain and fruits, tanning leather and the process of dyeing.** By the first century AD, mass production of metals like iron, copper, silver, gold and of alloys like brass and bronze were taking place.

2) Consider the following statements.

1. Magadha was one of the sixteen Mahajanapadas that emerged as the most powerful state and the centre of a vast empire.
2. Ajatasatru was the first king of Magadhan Empire.
3. Pataliputra was the first capital of Magadhas.

Which of the above statements is/are correct?

- a) 1 only
- b) 1, 2
- c) 1, 3

d) 2, 3

Solution: a)

The political fight among these mahajanapadas led ultimately to one of them namely **Magadha to emerge as the most powerful state and the centre of a vast empire**. The **earliest important ruler of Magadha was the king Bimbisara**, who ruled for 52 years from 544 BC to 492 BC. It seems that he was either killed or forced to commit suicide by his son Ajatasatru, who was eager to take over the throne himself.

Ajatasatru shifted the capital of Magadha from **Girivraj (Rajgir)** to Pataliputra (modern Patna, Bihar).

3) The Saharanpur Rules of 1855 is related to which of the following subjects?

- a) Permanent Revenue system
- b) Ryotwari system
- c) Subsidiary Alliance
- d) Mahalwari system

Solution: d)

The Mahalwari tenure was introduced in 1822 in major portions of the UP, the North Western province, parts of Central India and Punjab.

The Mahalwari system of land revenue under the scheme of 1833 was completed under the administration of James Thompson. The 66% rental demanded proved very harsh, too. In the **Saharanpur Rules of 1855**, it was revised to 50% by Lord Dalhousie.

4) Consider the following statements regarding Megalithic Burials.

1. The Iron Age of the southern peninsula is often related to Megalithic Burials.
2. Black and red pottery, iron artefacts such as hoes and sickles and small weapons were found in the

burial pits.

Which of the above statements is/are incorrect?

- a) 1 only
- b) 2 only
- c) Both 1 and 2
- d) Neither 1 nor 2

Solution: d)

The Iron Age of the southern peninsula is often related to Megalithic Burials. Megalith means Large Stone. The burial pits were covered with these stones. Such graves are extensively found in South India. Some of the important megalithic sites are Hallur and Maski in Karnataka, Nagarjunakonda in Andhra Pradesh and Adichchanallur in Tamil Nadu. **Black and red pottery, iron artefacts such as hoes and sickles and small weapons were found in the burial pits.**

5) Consider the following statements:

1. Factory Act, 1881 ruled that no children below the age of 14 years could be employed in a factory.
2. Full time factory inspectors were appointed under the Factory Act, 1911.
3. The Whitley Commission on Labour was set up in 1929 to inquire into the existing conditions of labour in industrial undertakings and plantations in India.

Which of the above statements is/are correct?

- a) 1, 2
- b) 1, 3
- c) 2, 3
- d) 1, 2, 3

Solution: c)

Factories Act of 1881 was the first legislation directly affecting industrial labourers in the country. It applied to all manufacturing establishments using power driven machinery, employing 100 or more labours and working for more than 120 days in a year. **It ruled that no children below the age of 7 could be employed in a factory** and nobody before attaining the age of 12 could be made to work for more than 9 hours a day.

Full time factory inspectors were appointed under the Factory Act, 1911 to see whether the provisions were being enforced.

The **Royal Commission on Labour or the Whitley Commission on Labour was set up in 1929 to inquire into the existing conditions of labour in industrial undertakings and plantations in India.** The Commission recommended the adoption of suitable legislation enabling the Competent Authority to collect and collate information regarding the living, working and socio-economic conditions of industrial labour.

31) Consider the following statements regarding agricultural technologies in Harappan Civilization?

1. All settlements of Harappa had assured irrigation.
2. Plough was used to dig the earth for turning the soil and planting seeds.
3. Carts were used to transport the agriculture goods

Which of the above statements is/are correct?

- a) 1, 2
- b) 2, 3
- c) 2 only
- d) 1, 3

Solution: b)

A new tool, the plough, was used to dig the earth for turning the soil and planting seeds. While real ploughs, which were probably made of wood, have not survived, toy models have been found. **As this region does not receive heavy rainfall, some form of irrigation may have been used.**



How were goods carried from one place to another?

Look at the illustrations. One shows a toy and the other is a seal.

Can you suggest what the modes of transport used by the Harappans were? Did you come across illustrations of wheeled vehicles in earlier lessons?



Food f
While n
in the c
These f
nersons

32) Consider the following statements regarding Mauryan Kingdom.

1. The mainstay of economy in this period was agriculture.
2. The Mauryan state founded new agricultural settlements to bring virgin land under cultivation.
3. Sitadhyaksha officer was given the responsibility to look after the inland navigation.

Which of the above statements is/are correct?

- a) 1 only
- b) 1, 2
- c) 1, 3
- d) 1, 2, 3

Solution: b)

The Mauryas maintained a huge standing army and employed a large number of state officials. **These soldiers and officials were paid in cash.**

As the normal taxes were not considered sufficient to meet all the needs of the state and hence the state undertook and regulated numerous economic activities to generate more and more resources.

The mainstay of economy in this period was agriculture. The Mauryan state founded new agricultural settlements to bring virgin land under cultivation. People from overpopulated areas and prisoners of war were brought to these new settlements to work on the fields.

These villages belonged to king and were looked after by government official called **sitadhyaksha or superintendent of agriculture.**

33) Consider the following pairs.

Mahajanapadas	Cities
1. Magadha	Rajagriha
2. Kosala	Taxila
3. Avanti	Ujjain

Which of the above pairs is/are correctly matched?

- a) 1 only
- b) 1, 2
- c) 1, 3
- d) 2, 3

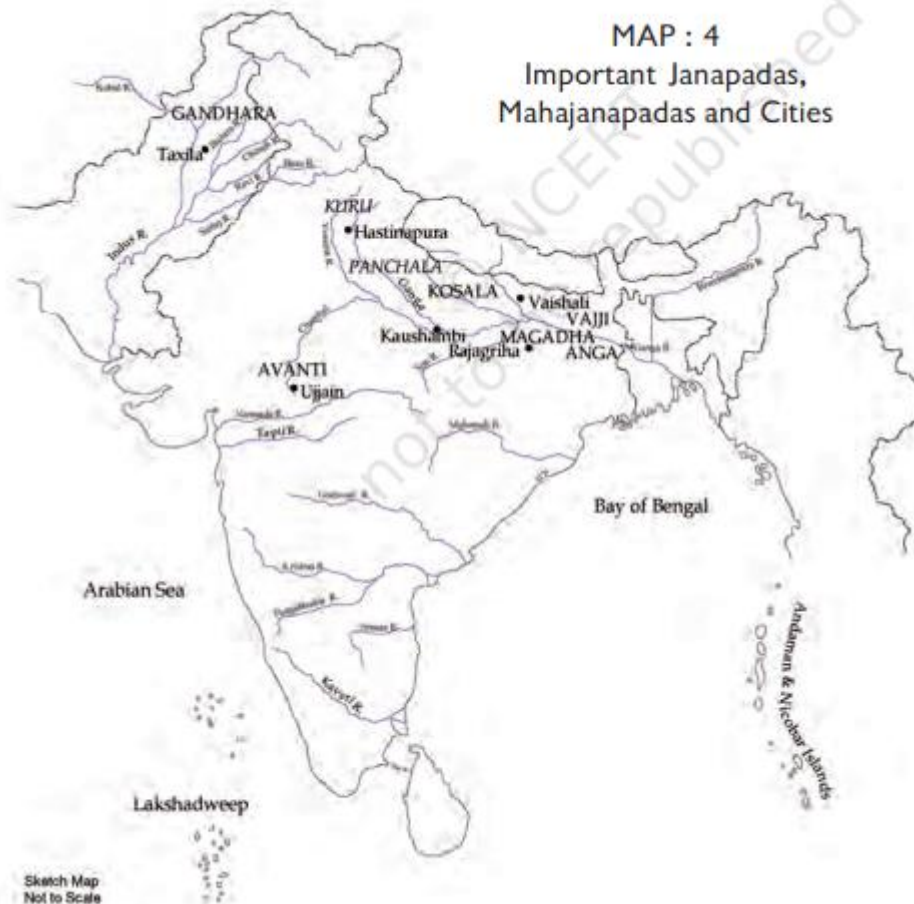
Solution: c)

Taxila was a city present in Gandhara Region – Present in Modern day Afghanistan.

INSIGHTSIAS

EXAM PREPARATION

MAP : 4
Important Janapadas,
Mahajanapadas and Cities



- 34) According to the terms of the 'Subsidiary Alliance', Indian rulers were
1. Not allowed to have their independent armed forces
 2. Supposed to protect the British representatives in the princely states

Select the correct answer code:

- a) 1 only
- b) 2 only
- c) Both 1 and 2
- d) Neither 1 nor 2

Solution: a)

According to the terms of this alliance, **Indian rulers were not allowed to have their independent armed forces.** They were to be protected by the Company but had to pay for the "subsidiary forces" that the Company was supposed to maintain for the purpose of this protection. If the Indian rulers failed to make the payment, then part of their territory was taken away as penalty.

For example, when Richard Wellesley was Governor-General (1798-1805), the Nawab of Awadh was forced to give over half of his territory to the Company in 1801, as he failed to pay for the "subsidiary forces". Hyderabad was also forced to cede territories on similar grounds.

- 35) Consider the following statements regarding Quit India movement.

1. The Quit India Movement is also known as 'August Kranti'.
2. The immediate trigger for the movement was the failure of Cabinet Mission plan and its offerings.
3. In a sharp contrast to Non-cooperation movement, where Gandhi withdrew after Chauri Chaura incident, in Quit India movement he refused to condemn the people's resort to violence.

Which of the above statements is/are correct?

- a) 1 only
- b) 1, 2
- c) 2, 3
- d) 1, 3

Solution: d)

The **Quit India Movement, also known as 'August Kranti'**, was a freedom movement led by Mahatma Gandhi. It began on 8th August, 1942 and turned out to be one of the most popular and powerful mass movements for independence. **The immediate trigger for the movement was the failure of Cripps Mission and its offerings.** In a sharp contrast to **Non-cooperation movement**, where Gandhi withdrew after Chauri Chaura incident, in Quit India movement **he not only refused to condemn the people's resort to violence but unequivocally held government responsible for it.**

- 36) Match the following sites of pre-historic rock paintings with the state they are located in:

Site	State
1. Tekkalkota	Maharashtra
2. Piklihal	Karnataka
3. Lakhudiyar	Uttarakhand

Select the correct answer code:

- a) 1, 2
- b) 3 only
- c) 2, 3
- d) 1, 3

Solution: c)

The granite rocks of Karnataka and Andhra Pradesh provided suitable canvases to the Neolithic paintings. There are several such sites but more famous among them are Kupgallu (Telangana), **Piklihal** and **Tekkalkota** (both in **Karnataka**).

The rock shelters on banks of the River Suyal at **Lakhudiyar (Uttarakhand)**, about twenty kilometres on the Almora–Barechina road, bear these prehistoric paintings. Lakhudiyar literally means one lakh caves.

Richest paintings are reported from the Vindhya ranges of Madhya Pradesh and their Kaimurean extensions into Uttar Pradesh. These hill ranges are full of Palaeolithic and Mesolithic remains.

37) Consider the following statements regarding Mesolithic age.

1. Mesolithic age is the transitional phase between the Palaeolithic and the Neolithic age.
2. The Mesolithic people lived on hunting, fishing, and food gathering and did not domesticate animals.
3. Bagor in Rajasthan had a distinctive microlithic industry.

Which of the above statements is/are correct?

- a) 1 only
- b) 1, 2
- c) 1, 3
- d) 2, 3

Solution: c)

In 9000 BC began an intermediate stage in Stone-Age culture, which is called the Mesolithic age. It intervened as a **transitional phase between the Palaeolithic and the Neolithic** or New Stone ages. **The Mesolithic people lived on hunting, fishing, and food gathering; at a later stage they also domesticated animals.**

The first three occupations continued the Palaeolithic practice, whereas the last developed in the Neolithic culture. Thus, the Mesolithic age marked a transitional phase in the mode of subsistence leading to animal husbandry. The characteristic tools of the Mesolithic age are microliths or tiny tools. Mesolithic sites abound in Rajasthan, southern UP, central and eastern India, and also south of the river Krishna. **Of them, Bagor in Rajasthan is very well excavated. It had a distinctive microlithic industry, and its inhabitants subsisted on hunting and pastoralism.** The site remained occupied for 5000 years from the fifth millennium BC onwards. Adamgarh in MP and Bagor in Rajasthan provide the earliest evidence for the domestication of animals in the Indian part of the subcontinent; this could be around 5000 BC.

38) Consider the following statements regarding Neolithic culture.

1. Cultivation of plants and domestication of animals led to the emergence of village communities based on sedentary life.
2. There is evidence for the cultivation of rice.
3. Clothes made of wool were used.
4. Cattle were used for obtaining animal products, but not for cultivation or transport.

Which of the above statements is/are correct?

- a) 1, 2, 3
- b) 1, 2
- c) 1, 2, 4
- d) 2, 3, 4

Solution: a)

The chief characteristic features of the Neolithic culture are the practice of agriculture, domestication of animals, polishing of stone tools and the manufacture of pottery. In fact, the **cultivation of plants and domestication of animals led to the emergence of village communities based on sedentary life** There was a great improvement in technology of making tools and other equipment used by man. Stone tools were now polished.

The polished axes were found to be more effective tools for hunting and cutting trees. Mud brick houses were built instead of grass huts. **Wheels were used to make pottery.** Pottery was used for cooking as well as storage of food grains. **Large urns were used as coffins for the burial of the dead.** There was also improvement in agriculture.

Wheat, barely, rice, millet were cultivated in different areas at different points of time. **Rice cultivation was extensive in eastern India.** Domestication of sheep, goats and cattle was widely prevalent. **Cattle were used for cultivation and for transport. The people of Neolithic Age used clothes made of cotton and wool.**

39) Consider the following statements regarding Chalcolithic period.

1. It was the period when copper and bronze came to be used.
2. The use of stone tools was given up.
3. The Harappan culture is considered as a part of Chalcolithic culture.

Which of the above statements is/are correct?

- a) 1 only
- b) 1, 2
- c) 1, 3
- d) 2, 3

Solution: c)

The Neolithic period is followed by Chalcolithic (copper-stone) period when copper and bronze came to be used. The new technology of smelting metal ore and crafting metal artifacts is an important development in human civilization. **But the use of stone tools was not given up.**

Some of the micro-lithic tools continued to be essential items. People began to travel for a long distance to obtain metal ores. This led to a network of Chalcolithic cultures and the Chalcolithic cultures were found in many parts of India.

Generally, Chalcolithic cultures had grown in river valleys. Most importantly, **the Harappan culture is considered as a part of Chalcolithic culture.**

40) Consider the following statements regarding Chalcolithic period.

1. Chalcolithic cultures had grown in river valleys.
2. Alloys were not known to Chalcolithic people.
3. Chalcolithic culture flourished mainly in North India and there are no evidence of Chalcolithic sites present in South India.

Which of the above statements is/are correct?

- a) 1 only
- b) 1, 2
- c) 1, 3
- d) 2, 3

Solution: a)

Generally, Chalcolithic cultures had grown in river valleys. In South India the river valleys of the Godavari, Krishna, Tungabhadra, Pennar and Kaveri were settled by farming communities during this period. Although they were not using metals in the beginning of the Metal Age, there is evidence of **copper and bronze (an alloy)** artifacts by the end of second millennium B.C. Several bronze and copper objects, beads, terracotta figurines and pottery were found at Paiyampalli in Tamil Nadu.

41) Consider the following statements regarding Harappan seals and inscriptions.

1. Harappan seals usually have a line of writing, probably containing the name and title of the owner.
2. Most inscriptions are long.
3. The script has too many signs – somewhere between 375 and 400.

Which of the above statements is/are correct?

- a) 1 only
- b) 1, 2
- c) 1, 3
- d) 2, 3

Solution: c)

Harappan seals usually have a line of writing, probably containing the name and title of the owner. Scholars have also suggested that the motif (generally an animal) conveyed a meaning to those who could not read. **Most inscriptions are short**, the longest containing about 26 signs. **Although the script remains undeciphered to date**, it was evidently not alphabetical (where each sign stands for a vowel or a consonant) as **it has just too many signs – somewhere between 375 and 400**. It is apparent that the script was written from right to left as some seals show a wider spacing on the right and cramping on the left, as if the engraver began working from the right and then ran out of space.

Consider the variety of objects on which writing has been found: seals, copper tools, rims of jars, copper and terracotta tablets, jewellery, bone rods, even an ancient signboard!

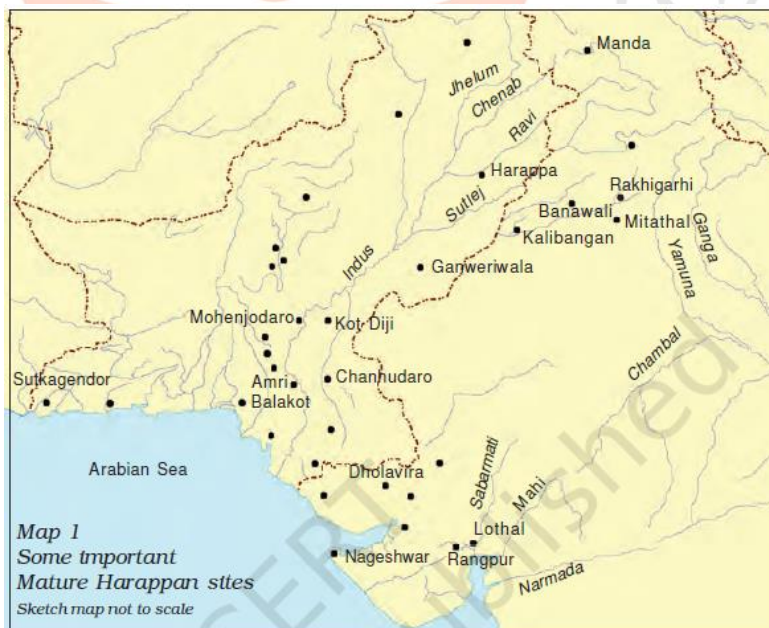
42) Which of the following Harappan sites are located in India?

1. Amri
2. Banawali
3. Lothal
4. Balakot

Select the correct answer code:

- a) 1, 2, 3
- b) 2, 3
- c) 2, 3, 4
- d) 1, 4

Solution: b)



43) Consider the following statements regarding Dholavira.

1. Here the walls were made of sandstone or limestone instead of mud bricks in many other Harappan sites.
2. Extensive mortal remains of humans have been discovered at Dholavira.
3. It was also a hub of manufacturing jewellery made of shells and semi-precious stones.

Which of the above statements is/are correct?

- a) 1, 2
- b) 1, 3
- c) 3 only
- d) 2, 3

Solution: b)

The site has a fortified citadel, a middle town and a lower town with **walls made of sandstone or limestone instead of mud bricks in many other Harappan sites.**

Archaeologists cite a cascading series of water reservoirs, outer fortification, two multi-purpose grounds — one of which was used for festivities and as a marketplace — nine gates with unique designs, and funerary architecture featuring tumulus — hemispherical structures like the Buddhist Stupas — as some of the unique features of the Dholavira site.

While unlike graves at other IVC sites, **no mortal remains of humans have been discovered at Dholavira.**

Remains of a copper smelter indicate of Harappans, who lived in Dholavira, knew metallurgy. It is believed that traders of Dholavira used to source copper ore from present-day Rajasthan and Oman and UAE and export finished products. It was also a **hub of manufacturing jewellery made of shells and semi-precious stones**, like agate and used to export timber.

44) Which of the following were the metropolis of Indus Valley Civilisation (IVC)?

1. Ganweriwala
2. Rakhigarhi
3. Dholavira
4. Harappa

Select the correct answer code:

- a) 3, 4
- b) 1, 3, 4
- c) 2, 3, 4
- d) 1, 2, 3, 4

Solution: d)

After Mohen-jo-Daro, **Ganweriwala** and **Harappa** in Pakistan and **Rakhigarhi** in Haryana, **Dholavira** is the fifth largest metropolis of IVC.

45) Consider the following statements regarding Rig Veda.

1. The term go (cow) has been mentioned maximum number of times and no other animal is mentioned so frequently.
2. Vedic people frequently pray for praja (children) and pasu (cattle).

Which of the above statements is/are correct?

- a) 1 only
- b) 2 only
- c) Both 1 and 2
- d) Neither 1 nor 2

Solution: b)

The term asva (horse) in the Rig Veda and its cognates appears in Sanskrit, Avestan, Greek, Latin, and other Indo-European languages.

In its various forms, the term asva occurs 215 times in the Rig Veda; no other animal is mentioned so frequently.

The term go (cow) occurs 176 times, and the term vrsabha (bull) 170 times. Both these terms taken together suggest the importance of cattle rearing.

The Rig Veda devotes two complete hymns in praise of the horse. Almost all the Vedic gods are associated with it, and this in particular applies to Indra and his companions, the Maruts. **Though the Vedic people frequently pray for praja (children) and pasu (cattle), they also specifically ask for horses, sometimes as many as a thousand.**

46) Consider the following statements regarding Later Vedic Period.

1. Agriculture became the chief occupation.
2. Iron was used extensively in this period.
3. Copper and Bronze coins were used as media of exchange, instead of Gold and Silver which were used

during Early Vedic period.

Which of the above statements is/are correct?

- a) 1 only
- b) 1, 2
- c) 1, 3
- d) 2, 3

Solution: b)

Economic Condition:

Iron was used extensively in this period and this enabled the people to clear forests and to bring more land under cultivation. **Agriculture became the chief occupation.** Improved types of implements were used for cultivation. Besides barley, rice and wheat were grown. Knowledge of manure was another improvement. Industrial activity became more varied and there was greater specialization. Metal work, leather work, carpentry and pottery made great progress. In addition to internal trade, foreign trade became extensive. The Later Vedic people were familiar with the sea and they traded with countries like Babylon. A class of hereditary merchants (vaniya) came into existence. Vaisyas also carried on trade and commerce. They organized themselves into guilds known as ganas. **Besides nishka of the Rig Vedic period, gold and silver coins like satamana and krishnala were used as media of exchange.**

47) Consider the following statements regarding Later Vedic Period.

1. Gods of the Early Vedic period like Indra and Agni became prominent during the Later Vedic period.
2. The importance of prayers declined and that of sacrifices increased.
3. Priesthood became a profession and a hereditary one.

Which of the above statements is/are correct?

- a) 1, 2
- b) 1, 3
- c) 2, 3
- d) 1, 2, 3

Solution: c)

Gods of the Early Vedic period like Indra and Agni lost their importance. Prajapathi (the creator), Vishnu (the protector) and Rudra (the destroyer) became prominent during the Later Vedic period.

Sacrifices were still important and the rituals connected with them became more elaborate. **The importance of prayers declined and that of sacrifices increased. Priesthood became a profession** and a hereditary one. The formulae for sacrifices were invented and elaborated by the priestly class. Therefore, towards the end of this period there was a strong reaction against priestly domination and against sacrifices and rituals. The rise of Buddhism and Jainism was the direct result of these elaborate sacrifices.

48) Which of the factors given below could have been responsible for emerging Magadha as prosperous Mahajanapadas?

1. Many rivers such as the Ganga and Son flowed through Magadha.
2. Use of Elephants in warfare
3. Presence of Iron ore mines in the region

Select the correct answer code:

- a) 1, 2
- b) 1, 3
- c) 2, 3
- d) 1, 2, 3

Solution: d)

Magadha became the most important Mahajanapadas in about two hundred years. Many rivers such as the Ganga and Son flowed through Magadha. This was important for transport, water supplies and making the land fertile. Parts of Magadha were forested.

Elephants, which lived in the forest, could be captured and trained for the army. Forests also provided wood for building houses, carts and chariots.

Besides, there were iron ore mines in the region that could be tapped to make strong tools and weapons.

49) The rulers of the Mahajanapadas of the Common Era exempted the taxes from

1. Farmers
2. Herders
3. Hunters and gatherers
4. Craft persons

Select the correct answer code:

- a) 1, 2
- b) 2, 3
- c) 3, 4
- d) None of the above

Solution: d)

As the rulers of the Mahajanapadas of the Common Era were building huge forts maintaining big armies, they needed more resources for which they collected taxes.

Taxes on crops were the most important. This was because most people were farmers. Usually, the tax was fixed at 1/6th of what was produced. This was known as bhaga or a share.

Craft persons: These could have been in the form of labour. For example, a weaver or a smith may have had to work for a day every month for the king.

Herders were also expected to pay taxes in the form of animals and animal produce. And **hunters and gatherers** also had to provide forest produce to the raja.

50) Which of the following edicts mentions the personal name of Ashoka?

- a) Kalinga
- b) Lumbini
- c) Maski
- d) Taxila

Solution: c)

Maski is a town and an archaeological site in the Raichur district of the state of Karnataka. It lies on the bank of the Maski river which is a tributary of the Tungabhadra.

Maski derives its name from Mahasangha or Masangi. **The site came into prominence with the discovery of a minor rock edict of Emperor Ashoka by C. Beadon in 1915. It was the first edict of Emperor Ashoka that contained the name Ashoka in it instead of the earlier edicts that referred him as Devanampiya piyadasi.**

51) Which one of the following books of ancient India has the love story of the son of the founder of Sunga dynasty?

- a) Meghadoota
- b) Malavikagnimitra
- c) Ratnavali

d) Swapnavasavadatta

Solution: b)

The Malavikagnimitra is a Sanskrit play by Kālidāsa. Based on some events of the reign of Pushyamitra Shunga, it is his first play. Malavikagnimitra tells the story of the love of Agnimitra, the Shunga Emperor at Vidisha, for the beautiful handmaiden of his chief queen.

52) Consider the following statements:

1. Kanishka patronised not only Buddhist scholars like Vasumitra, but also patronised important scholars like Asvagosha and Nagarjuna.
2. Kanishka sent missionaries to Central Asia and China for the propagation of Mahayana Buddhism.

Which of the above statements is/are correct?

- a) 1 only
- b) 2 only
- c) Both 1 and 2
- d) Neither 1 nor 2

Solution: c)

Kanishka patronised not only Buddhist scholars like Vasumitra, but also patronised the famous physician of ancient India, Charaka. **Asvagosha and Nagarjuna were other important scholars patronized by him.**

Mahayana Buddhism came in vogue during Kanishka's rule. It was established in the Fourth Buddhist Council convened by him where matters relating to Buddhist theology and doctrine were discussed.

In Mahayana Buddhism, the Buddha came to be worshipped with flowers, garments, perfumes and lamps.

53) Ptolemy, a Greek writer, mentions many important ports in the Deccan. Among them, the greatest port of the Satavahanas in Western Deccan was

- a) Pulamayi
- b) Satakarni
- c) Kalyani
- d) Ganjam

Solution: c)

Vashishtaputra Pulamayi extended the Satavahana power up to the mouth of the Krishna river. He issued coins on which the image of ships was inscribed. They reveal the naval power and maritime trade of the Satavahanas.

Their greatest port was Kalyani on the west Deccan. Gandakasela and Ganjam on the east coast were the other important seaports.

54) Consider the following statements regarding Fa-Hien's account of the Gupta administration.

1. He appreciated the efficiency of the Gupta administration as he was able to travel without any fear throughout the Gangetic valley.
2. There was widespread poverty and frequent famines.
3. There was no state interference in the individual's life.

Which of the above statements is/are correct?

- a) 1, 2
- b) 1, 3
- c) 2, 3
- d) 1, 2, 3

Solution: b)

- The famous Chinese pilgrim, Fa-Hien visited India during the reign of Chandragupta II. Out of his nine years stay in India, he spent six years in the Gupta Empire.
- He characterises the Gupta administration as mild and benevolent.
- There were **no restrictions on people's movements** and **they enjoyed a large degree of personal freedom**. There was **no state interference in the individual's life**.
- The administration was so efficient that the roads were kept safe for travellers (he was able to travel without any fear throughout the Gangetic valley), and there was no fear of thieves. He mentioned that people were generally prosperous and the crimes were negligible.

55) Consider the following statements regarding the ruler Harshvardhana.

1. Hiuen Tsang converted him to Hinayana Buddhism.
2. He abolished the dowry system in his kingdom.
3. He organized a religious assembly at Kanauj.

Which of the above statements is/are incorrect?

- a) 1, 2
- b) 2 only
- c) 3 only
- d) 1, 3

Solution: a)

- In his early life, Harsha was a devout Saiva but later he became an ardent Hinayana Buddhist.
- **Hiuen Tsang converted him to Mahayana Buddhism. Harsha prohibited the use of animal food in his kingdom and punished those who kill any living being.**
- **Dowry system was prevalent in Harsha's empire.**
- **Harsha organized a religious assembly at Kanauj to honour the Chinese pilgrim Hiuen Tsang towards the close of his reign. He invited representatives of all religious sects.**

56) Consider the following statements regarding the numismatic designs during Cholas.

1. Coins with the traditional seated tiger, fish and bow emblem were adopted by the Cholas.
2. Several coins carried the name of feudatories and their titles.

Which of the above statements is/are correct?

- a) 1 only
- b) 2 only
- c) Both 1 and 2
- d) Neither 1 nor 2

Solution: c)

There are other coins with the **traditional seated tiger, fish and bow emblem adopted by the Cholas** that were minted and in circulation.

Several coins carrying the name of feudatories and their titles started finding a mention in Chola inscriptions. This can be clearly viewed as a sign of the downfall of economic control that the imperial Chola had on their feudatories. Names like jaya-mada, uththama-gandan-mada, chamara-mada, biruda-mada, bhujabala-mada found mentions in their respective regional Chola inscriptions.

57) Chola administration exempted which of the following from taxation?

1. Forests
2. Ceremonial occasions like marriages
3. Internal and external trade via tolls
4. Mines and ports

Select the correct answer code:

- a) 1, 2

- b) 1, 3, 4
- c) 2, 4
- d) None of the above

Solution: d)

The Cholas had an excellent system of administration. The land revenue department was well organized. It was called as puravubarithinaikkalam. All lands were carefully surveyed and classified for assessment of revenue.

Besides land revenue, there were tolls and customs on goods taken from one place to another, various kinds of professional taxes, dues levied on ceremonial occasions like marriages and judicial fines.

Taxes on mines, ports, forests and salt pans were collected. Professional tax and house tax were also collected.

58) Which of the following were the military conquests carried out by Rajaraja I?

1. Captured Raichur doab by defeating Chalukyas
2. The conquest of Gangavadi and Nolambapadi in the Mysore region.
3. Annexed whole of Sri Lanka

Select the correct answer code:

- a) 1, 2
- b) 1, 3
- c) 2, 3
- d) 1, 2, 3

Solution: a)

Rajaraja I (985 – 1014 A.D.)

It was under Rajaraja I and his son Rajendra I that the Chola power reached its highest point of glory. His military conquests were:

1. The defeat of the Chera ruler Bhaskararavivarman in the naval battle of Kandalursalai and the destruction of the Chera navy.
2. The defeat of the Pandya ruler, Amarabhujanga and establishment of Chola authority in the Pandya country.
3. **The conquest of Gangavadi, Tadigaipadi and Nolambapadi located in the Mysore region**
4. The Chola victory over the growing power of the Western Chalukyas of Kalyani. Satyasraya was defeated and Rajaraja I captured the Raichur Doab, Banavasi and other places. Hence the Chola power extended up to the river Tungabhadra

Rajendra I defeated mahinda and seized the southern Sri Lanka. Thereafter, **whole of Sri Lanka was made part of the Chola Empire.**

59) Consider the following statements.

1. The Gurjara-Pratiharas were the last of the Rajput rulers.
2. The Pratiharas involved themselves in a three cornered contest with the Palas of Bengal and the Rashtrakutas of Deccan.
3. The Rajput clans were largely united against a common enemy.

Which of the above statements is/are correct?

- a) 1, 2
- b) 2 only
- c) 2, 3
- d) 1, 3

Solution: b)

The Gurjara-Pratiharas were the earliest of the Rajput rulers. Its first great leader was Harischandra. He conquered extensive territory in Rajaputana and ruled with his capital at Bhinmal. The Gurjaras were in different branches.

One branch ruled Gujarat and another at Avanthi. **The Pratiharas involved themselves in a three cornered contest with the Palas of Bengal and the Rashtrakutas of Deccan.** Later the Pratiharas became weak.

The Chauhans, the most valiant of the Rajput races, ruled Ajmir. Vigraharaj was their most important king, who occupied Delhi. Therefore the Chauhans faced the onslaught of the Muslims under Muhammad of Ghori. The Paramaras were also important Rajput rulers of this period. The most important king was Bhoja. His military conquests as well as cultural contributions remain notable in the history of Rajputs. **Constant fighting weakened the Rajputs. Also, they never united against a common enemy.**

60) The Battle of Tarain is related to

- a) The Hindu princes of north India fighting against Muhammad Ghori
- b) Revolt in Gujarati kingdom against Mahmud of Ghazni
- c) Land battles in Sind between Muslim princes
- d) The battle between the Marathas and Rajputs

Solution: a)

The Hindu princes of north India formed a confederacy under the command of Prithviraj Chauhan. Prithviraj defeated Ghori in the battle of Tarain near Delhi in 1191 A.D.

In the ensuing Second Battle of Tarain in 1192, Muhammad Ghori thoroughly routed the army of Prithviraj, who was captured and killed.

The second battle of Tarain was a decisive battle. It was a major disaster for the Rajputs. Their political prestige suffered a serious setback.

The whole Chauhan kingdom now lay at the feet of the invader. The first Muslim kingdom was thus firmly established in India at Ajmer and a new era in the history of India began.

61) Consider the following statements regarding administration during Cholas.

1. All lands were carefully surveyed and classified for assessment of revenue.
2. Chola kings undertook royal tours to increase the efficiency of the administration.
3. All legal professions were exempted from tax liabilities.
4. During the hard times, there were remissions of taxes.

Which of the above statements is/are correct?

- a) 1, 2
- b) 1, 2, 3
- c) 1, 2, 4
- d) 1, 2, 3, 4

Solution: c)

There were tolls and customs on goods taken from one place to another, various kinds of professional taxes, dues levied on ceremonial occasions like marriages and judicial fines. Moreover, the land revenue department was well organized. It was called puravubarithinaikkalam.

The residential portion of the village was called ur nattam. These and other lands such as the lands belonging to temples were exempted from tax.

Chola kings undertook royal tours to increase the efficiency of the administration. There were regular drills with officials.

During the hard times, there were remission of taxes and Kulottunga I became famous by abolishing tolls and earned the title—Sungam Tavirtta Cholan. The main items of government expenditure were the king and his court, army and navy, roads, irrigation tanks and canals.

62) Under Rashtrakuta Empire, Vishayapatis and bhogapatis were

- a) Religious priests who performed sacrificial ceremonies.
- b) Accountants of the royal treasury.

- c) Administrators of districts and its subdivisions, respectively
- d) Land guards who protected the extent of the empire.

Solution: c)

The Rashtrakuta Empire was divided into several provinces called rashttras under the control of rashttrapatis.

They were further divided into vishayas or districts governed by vishayapatis.

The next subdivision was bhukti consisting of 50–70 villages under the control of bhogapatis.

These officers were directly appointed by the central government. The village administration was carried on by the village headman.

However, the village assemblies played a significant role in the village administration.

63) Consider the following statements.

1. Rashtrakuta kingdom repeatedly fought battles against Palas.
2. Cheras, Rashtrakutas, Pandyas were involved in tripartite struggle.

Which of the above statements is/are incorrect?

- a) 1 only
- b) 2 only
- c) Both 1 and 2
- d) Neither 1 nor 2

Solution: b)

Palas, Rashtrakutas, Pratiharas were involved in tripartite struggle.

64) Consider the following statements regarding Rashtrakutas.

1. The Rashtrakuta Empire was divided into several provinces called rashttras under the control of rashttrapatis.
2. The districts were further divided into bhukti consisting of 50–70 villages under the control of vishayapatis.
3. Officers administering districts or subdivisions were directly appointed by the central government.

Which of the above statement sis/are correct?

- a) 1, 2
- b) 1, 3
- c) 2, 3
- d) 1, 2, 3

Solution: b)

The Rashtrakuta Empire was divided into several provinces called rashttras under the control of rashttrapatis. They were further divided into vishayas or districts governed by vishayapatis. The next subdivision was **bhukti consisting of 50–70 villages under the control of bhogapatis. These officers were directly appointed by the central government.** The village administration was carried on by the village headman. However, the village assemblies played a significant role in the village administration.

65) Uttaramerur inscription is a famous Tamil inscription dating to the 10th century AD. It deals with

- a) the segregation of the law-making bodies and executive bodies.
- b) qualification of candidates standing for elections
- c) rights and inheritances of a women.
- d) sacrificial ceremonies to be performed in the North.

Solution: b)

This inscription, dated around 920 A.D. in the reign of Parantaka Chola [907-955 A.D.], is an outstanding document in the history of India. It is a veritable written constitution of the village assembly that functioned 1,000

years ago, The inscription gives astonishing details about the constitution of wards, the **qualification of candidates standing for elections**, the disqualification norms, the mode of election, the constitution of committees with elected members, the functions of those committees, the power to remove the wrongdoer, etc.

66) Consider the following statements regarding the classification of lands under Akbar.

1. Parauti is land which is annually cultivated for each crop in succession and is never allowed to lie fallow.
2. Chachar is land that was allowed to lie fallow for three or four years.
3. Polaj is land left out of cultivation for a time that it may recover its strength.

Which of the above statements is/are correct?

- a) 1, 3
- b) 2 only
- c) 3 only
- d) 2, 3

Solution: b)

The Emperor Akbar in his profound sagacity classified the lands and fixed a different revenue to be paid by each.

Polaj is land which is annually cultivated for each crop in succession and is never allowed to lie fallow.

Parauti is land left out of cultivation for a time that it may recover its strength.

Chachar is land that was allowed to lie fallow for three or four years.

Banjar is land uncultivated for five years and more.

67) Consider the following statements regarding the Mansabdari system instituted in Mughal India.

1. Mansabdars received their salaries as revenue assignments called jagirs.
2. Unlike muqtis, most mansabdars did not actually reside in or administer their jagirs.
3. Mansabdars had no military responsibility.

Which of the above statements is/are correct?

- a) 1, 2
- b) 1, 3
- c) 2, 3
- d) 1, 2, 3

Solution: a)

As the empire expanded to encompass different regions the Mughals recruited diverse bodies of people. From a small nucleus of Turkish nobles (Turanis) they expanded to include Iranians, Indian Muslims, Afghans, Rajputs, Marathas and other groups.

- Those who joined Mughal service were enrolled as mansabdars.
- The term mansabdar refers to an individual who holds a mansab, meaning a position or rank.

Mansabdars received their salaries as revenue assignments called jagirs which were somewhat like iqtas.

But unlike muqtis, most mansabdars did not actually reside in or administer their jagirs. They only had rights to the revenue of their assignments which was collected for them by their servants.

Rank and salary were determined by a numerical value called zat. The higher the zat, the more prestigious was the noble's position in court and the larger his salary.

The mansabdar's military responsibilities required him to maintain a specified number of sawar or cavalymen.

The mansabdar brought his cavalymen for review, got them registered, their horses branded and then received money to pay them as salary.

68) Consider the following statements regarding the features of Mughal Architecture.

1. Mughal Architecture is a blend of Indian, Persian, and Turkish architectural style.
2. The Building materials used mostly White sandstone and red marbles.
3. The arches, chhatra, and various styles of domes were further developed under the Mughals.

Which of the above statements is/are correct?

- a) 1 only
- b) 1, 2, 3
- c) 2, 3
- d) 1, 3

Solution: d)

Important Features of Mughal Architecture:

- **Blend of Indian, Persian, and Turkish architectural style.**
- Different types of buildings, such as majestic gates (entrances), forts, mausoleums, palaces, mosques, sarais, etc.
- **Building material: Mostly, red sandstone and white marble were used.**
- Specific features such as the Charbagh style (garden layout) of the mausoleums, pronounced bulbous domes, slender turrets at the corners, broad gateways, beautiful calligraphy, arabesque, and geometric patterns on pillars and walls, and palace halls supported on pillars.
- The **arches, chhatra, and various styles of domes** became hugely popular in the Indo-Islamic architecture and were further developed under the Mughals.
- It became so widespread especially in north India that these can be seen further in the colonial architecture of Indo-Sarcenic style.

69) Consider the following statements regarding the evolution of Mughal architecture.

1. Fatehpur Sikri which was the first planned city of the Mughals, was built during the reign of Babur.
2. Shah Jahan was called 'the prince of builders' as the Mughal architecture reached its zenith under his reign.
3. The Mughal architecture saw a decline during the reign of Aurangzeb.

Which of the above statements is/are correct?

- a) 1, 2
- b) 1, 3
- c) 2, 3
- d) 1, 2, 3

Solution: c)

Akbar built the city of **Fatehpur Sikri** which was the first planned city of the Mughals and served as his capital from 1571 to 1585.

Shah Jahan is called '**the prince of builders**' as the Mughal architecture reached its zenith under his reign.

Overall the Mughal architecture saw a decline in the Aurangzeb's reign.

70) Consider the following statements regarding Humayun's Tomb.

1. Humayun's Tomb is also known as the precursor of the Taj Mahal.
2. It is built upon a raised platform is a mix of Indian and Persian artistry.
3. It is also declared as a UNESCO World Heritage Site.

Which of the above statements is/are correct?

- a) 1, 2
- b) 1, 3
- c) 2, 3
- d) 1, 2, 3

Solution: d)

Humayun's Tomb, also known as the precursor of the Taj Mahal was the first imposing structure of the Mughals which was built by his widow Hamida Begum and designed by Persian architect Mirak Mirza Ghiyas. The mausoleum **built upon a raised platform is a mix of Indian and Persian artistry** using red sandstone and white marble.

It has a Persian Charbagh style. The tomb was **declared as a UNESCO World Heritage Site** in 1993.

71) The Chauth and Sardeshmukhi were taxes conceived during the times of

- Sambhaji
- Shivaji
- Madhavrao
- Balaji Bajirao

Solution: b)

Chauth and Sardeshmukhi were taxes conceived during the times of the Shivaji.

'Chauth' means basically 1/4th i.e 25% of gross revenue or produce to be paid to jagirdars of Maratha Empire from hostile or alien state. In return the state paying the tax would get an assurance of non-aggression from the Maratha army against the enemy state.

'Sardeshmukhi' is an additional 10% tax levied upon the collected 'Chauth'. The reasons for the additional tax was due to the King claiming hereditary rights upon the tax collection.

72) Consider the following statements regarding Vijayanagara Kingdom.

- The construction of tall Raya Gopurams and Kalyana mandapam with carved pillars in the temple premises was the principal feature of Vijayanagara Kingdom.
- The horse was the most common animal found in the pillars of the temple premises.
- The chief items of exports were gold, silver and diamonds.
- There was a great development in Sanskrit and Telugu literature.

Which of the above statements is/are correct?

- 1, 2
- 1, 2, 4
- 1, 3, 4
- 2, 3, 4

Solution: b)

- The temple building activity further gained momentum during the Vijayanagar rule. **The chief characteristics of the Vijayanagara architecture were the construction of tall Raya Gopurams or gateways and the Kalyana mandapam with carved pillars in the temple premises.**
- The sculptures on the pillars were carved with distinctive features. **The horse was the most common animal found in these pillars.**
- There were a number of seaports on the Malabar coast, the chief being Cannanore. Commercial contacts with Arabia, Persia, South Africa and Portugal on the west and with Burma, Malay peninsula and China on the east flourished. **The chief items of exports were cotton and silk clothes, spices, rice, iron, saltpeter and sugar.**
- The imports consisted of horses, pearls, copper, coral, mercury, China silk and velvet clothes. The art of shipbuilding had developed. **Different languages such as Sanskrit, Telugu, Kannada and Tamil flourished in the regions. There was a great development in Sanskrit and Telugu literature.**
- The peak of literary achievement was reached during the reign of Krishna Deva Raya. He himself was a scholar in Sanskrit and Telugu.

73) Consider the following about the Bahmani Kingdom.

- It was the first independent Islamic Kingdom in South India.
- Bahmani Sultans were patrons of the Persian language.
- Bidri artwork is associated with Bahmani Kingdom.

Which of the above statements is/are correct?

- a) 1, 2
- b) 1, 3
- c) 2, 3
- d) 1, 2, 3

Solution: d)

- The Bahmani Sultanate was a Muslim state of the Deccan in South India and one of the great medieval Indian kingdoms. **It was the first independent Islamic Kingdom in South India.**
- Some members of the dynasty became well-versed in that language and composed its literature in **Persian language.**
- The craftsmen of Bidar then were so famed for their inlay work on copper and silver that it came to be known as **Bidri.**

74) The amara-nayaka system was a major political innovation of the

- a) Cholas and Cheras
- b) Hoysala Empire
- c) Vijayanagara Empire
- d) Pandya Empire

Solution: c)

The amara-nayakas were military commanders who were given territories to govern. They collected taxes and other dues from peasants, craftsmen and traders in the area. They retained part of the revenue for personal use and for maintaining a stipulated contingent of horses and elephants. These contingents provided the Vijayanagara kings with an effective fighting force with which they brought the entire southern peninsula under their control. The amara-nayakas sent tribute to the king annually and personally appeared in the royal court with gifts to express their loyalty.

SIMPLIFYING IAS EXAM PREPARATION

75) Which of the following was a very important seaport in the Kakatiya kingdom?

- a) Kakinada
- b) Nelluru
- c) Machilipatnam
- d) Motupalli

Solution: d)

Some texts suggest that Motupalli was an important sea-port in the kingdom of Ganapati (an important Kakatiya ruler), frequented by foreign merchants.

76) Which of the following were advocated by the Bhakti movement?

1. Annihilation of the age-old caste system.
2. There is God in every human being.
3. Conceptual erudition.

Select the correct answer code:

- a) 1 only
- b) 1, 2
- c) 1, 3
- d) 2, 3

Solution: b)

- The conception of bhakti did away with the elite tradition of Sanskrit and accepted the more acceptable language of the common man.

- Kabir (Hindi) says that Sanskrits are like stagnant water of a well and Bhasa is like flowing water. A 7th century Shaiva, Tamil writer Manikkarvachakar, has something similar to say about it in his book of poetry Thiruvachakam.
- **Bhakti also attacked the age-old caste system and devoted itself to the worship of humanity**, because the catchword of bhakti is that **God is there in every human being**. The movement was in essence subaltern, as most of its poets belonged to the so-called 'lower' castes.
- Bhakti is anti-theology and **against any kind of conceptual erudition**.

77) Consider the following statements regarding Bhakti traditions.

1. Vedas were completely rejected by the Bhakti saints.
2. The principal deities of the Vedic period like Agni, Indra and Soma, became marginal figures and rarely visible in textual or visual representations.
3. Devotees often tended to project their chosen deity, either Vishnu or Shiva, as supreme.

Which of the above statements is/are correct?

- a) 1, 2
- b) 1, 3
- c) 3 only
- d) 2, 3

Solution: d)

The principal deities of the Vedic pantheon, Agni, Indra and Soma, become marginal figures, rarely visible in textual or visual representations.

And while we can catch a glimpse of Vishnu, Shiva and the goddess in Vedic mantras, these have little in common with the elaborate Puranic mythologies.

However, in spite of these obvious discrepancies, **the Vedas continued to be revered as authoritative**. Not surprisingly, there were sometimes conflicts as well—those who valued the Vedic tradition often condemned practices that went beyond the closely regulated contact with the divine through the performance of sacrifices or precisely chanted mantras.

Also, **devotees often tended to project their chosen deity, either Vishnu or Shiva, as supreme**.

During this time, expressions of devotion ranged from the routine worship of deities within temples to ecstatic adoration where devotees attained a trance-like state. The singing and chanting of devotional compositions was often a part of such modes of worship. This was particularly true of the Vaishnava and Shaiva sects.

78) Consider the following statements.

1. As per Madhava, dualism of Jivatma and Paramatma does not exist and they dwell in an eternal cosmic entity.
2. As per Ramanuja, all the objects in creation are real but not illusory.

Which of the above statements is/are incorrect?

- a) 1 only
- b) 2 only
- c) Both 1 and 2
- d) Neither 1 nor 2

Solution: a)

In the 13th century, **Madhava from Kannada region propagated Dvaita or dualism of Jivatma and Paramatma**. According to his philosophy, **the world is not an illusion but a reality. God, soul and matter are unique in nature**.

In the 12th century, **Ramanuja preached Visishtadvaita**. According to him, God is Sagunabrahman. The creative process and **all the objects in creation are real and not illusory**, as was held by Sankaracharya. Therefore, God,

soul and matter is real. But God is inner substance and the rest are his attributes. He also advocated prabattimarga or path of self-surrender to God. He invited the downtrodden to Vaishnavism.

79) As per Sufism, Tasawwuf

1. considered rituals more important than self-discipline in reaching the highest goal.
2. stressed the elements of love and devotion as effective means of the realisation of God.

Select the correct answer code:

- a) 1 only
- b) 2 only
- c) Both 1 and 2
- d) Neither 1 nor 2

Solution: b)

- Tasawwuf is another name for Sufism.
- In Sufism, self-discipline was considered an essential condition to gain knowledge of God by sense of perception.
- While orthodox Muslims emphasise external conduct and rituals, the Sufis lay stress on inner purity.
- According to them, one must have the guidance of a pir or guru, without which spiritual development is impossible.

80) Sufi silsilas were

- a) an unbroken spiritual genealogy to the Prophet.
- b) holy locations signifying the final demise of Sufi masters.
- c) pilgrimage to the tomb of Sufi saints
- d) chanting practices taught by the master.

Solution: a)

INSIGHTSIAS
SIMPLIFYING IAS EXAM PREPARATION

Sufi silsilas began to crystallise in different parts of the Islamic world around the 12th century. The word silsila literally means a chain, signifying a continuous link between master and disciple, stretching as an unbroken spiritual genealogy to the Prophet.

- Chisti silsila, tracing its origin to Khwaja Chisti, was one such popular silsila.

81) Consider the following statements.

1. The people of Neolithic Age used clothes made of cotton and wool.
2. During the Neolithic phase, the cultivation of plants and domestication of animals led to the emergence of village communities based on sedentary life.

Which of the above statements is/are correct?

- a) 1 only
- b) 2 only
- c) Both 1 and 2
- d) Neither 1 nor 2

Solution: c)

During the Neolithic phase, the cultivation of plants and domestication of animals led to the emergence of village communities based on sedentary life.

The people of Neolithic Age used clothes made of cotton and wool.

82) Consider the following statements regarding Mesolithic and Neolithic cultures.

1. Hunting-gathering pattern of life was prevalent both in Mesolithic and Neolithic period.
2. Evidence of pottery is absent from the Neolithic culture but is markedly found in Mesolithic culture.
3. Mesolithic cultures did not practice domestication of animals unlike Neolithic people.

Which of the above statements is/are correct?

- a) 1, 2
- b) 1 only
- c) 1, 3
- d) 2, 3

Solution: b)

Hunting-gathering pattern of life was prevalent since Old stone age to Mesolithic and Neolithic.

However, there seems to have been a shift from big animal hunting to small animal hunting and fishing. This is how bows and arrows were used in this period.

Domestication of animals, horticulture and primitive cultivation started during Mesolithic period itself.

However, during Neolithic period, domestication of sheep, goats and cattle was widely prevalent. Cattle were used for cultivation and for transport.

During Neolithic age, wheels were used to make pottery. Pottery was used for cooking as well as storage of food grains.

83) With reference to Ancient India, Consider the following statements regarding Shrenis?

1. Many crafts persons and merchants formed associations known as shrenis.
2. Shrenis served as banks, where rich men and women deposited money.
3. They vehemently opposed religious institutions and traditions

Which of the above statements is/are correct?

- a) 1 only
- b) 1, 2
- c) 1, 3
- d) 2, 3

Solution: b)

INSIGHTSIAS
SIMPLIFYING IAS EXAM PREPARATION

- **Many crafts persons and merchants now formed associations known as shrenis.** These shrenis of crafts persons provided training, procured raw material, and distributed the finished product.
- Then shrenis of merchants organised the trade. **Shrenis also served as banks, where rich men and women deposited money.**
- This was invested, and part of the interest was returned or used to **support religious institutions** such as monasteries.

84) Consider the following statements regarding the principal features of Later Vedic Period.

1. Larger kingdoms were formed during the later Vedic period.
2. A large number of new officials were involved in the administration in addition to the existing purohita, senani and gramani.
3. Iron was not used in this period and instead copper was used extensively.

Which of the above statements is/are correct?

- a) 1 only
- b) 1, 3
- c) 1, 2
- d) 2, 3

Solution: c)

- **Larger kingdoms were formed during the later Vedic period.** Many jana or tribes were amalgamated to form janapadas or rashtras in the later Vedic period.

- **In the later Vedic period, a large number of new officials were involved in the administration in addition to the existing purohita, senani and gramani.** They include the treasury officer, tax collector and royal messenger.
- **Iron was used extensively in this period** and this enabled the people to clear forests and to bring more land under cultivation. Agriculture became the chief occupation

85) Consider the following statements.

1. Samudragupta was the first ruler of the Gupta dynasty to adopt the grand title of maharajadhiraja.
2. Allahabad pillar inscription was composed as a Kavya by Harishena.
3. Allahabad pillar inscription is of a special kind known as a prashasti meaning 'in praise of'.

Which of the above statements is/are correct?

- a) 1, 2
- b) 1, 3
- c) 2, 3
- d) 1, 2, 3

Solution: c)

Chandragupta was the first ruler of the Gupta dynasty to adopt the grand title of maharaj-adhiraja, a title that his son **Samudragupta also used**. His great grandfather and grandfather are mentioned simply as maha-rajahs. It seems as if the family gradually rose to importance.

Allahabad pillar inscription was composed as a Kavya by Harishena, who was a poet and a minister at the court of Samudragupta. This inscription is of a special kind known as a prashasti, a Sanskrit word, meaning 'in praise of'.



6. Environment

- 1) Why do exotic species post a threat to an indigenous ecosystem such as in a Lake or an isolated island in the Andamans?
 1. Such species may cause diseases in native species.
 2. They may be predators of local species.
 3. Such species compete with the local or native species for food.

Select the correct answer code:

- a) 1, 2
- b) 1, 3
- c) 2, 3
- d) 1, 2, 3

Solution: d)

Exotic species introduced to new environments often reset the ecological conditions in that new habitat, threatening the species that exist there; this is the reason that they are also termed invasive species.

Invasive species that are closely related to rare native species have the potential to hybridize with the native species; harmful effects of hybridization have led to a decline and even extinction of native species.

Invasive species can change the food web in an ecosystem by **destroying or replacing native food sources**. The invasive species may provide little to no food value for wildlife.

Lakes and islands are particularly **vulnerable to extinction threats from introduced species**.

- 2) Consider the following statements regarding Bioluminescent organisms.
 1. Bioluminescent organisms are found only in the ocean environments.

2. The colour of the light emitted by the organism depends on their chemical properties.
3. In some organisms, Bioluminescence acts as defence mechanism, to protect itself from other organisms.

Which of the above statements is/are correct?

- a) 1, 2
- b) 3 only
- c) 2, 3
- d) 1, 3

Solution: c)

“Bioluminescent organisms are usually found in the ocean environments, but they are also found on terrestrial environments. The colour of the light emitted by the organism depends on their chemical properties.”

In the case of fungi, the luminescence comes from the enzyme, luciferase. “The [green] light emits when luciferans is catalysed by the enzyme luciferase, in the presence of oxygen. During the chemical reaction, several unstable intermediate products are released as excess energy that makes them visible as light.

Bioluminescent mushrooms may glow for a number of reasons. The simplest explanation could be that bioluminescence attracts insects, which helps in dispersing spores. **It may also be a mechanism for the organism to protect itself from frugivorous (or fruit-eating) animals.**

3) Consider the following statements regarding Parasitism.

1. Parasitism occurs when two organisms interact, but while one benefits, the other experiences harm.
2. Tapeworm attaching itself to the intestine of a cow is an example of Parasitism.
3. The parasite always kill the host.

Which of the above statements is/are correct?

- a) 1, 2
- b) 1, 3
- c) 1 only
- d) 2, 3

Solution: a)

A parasite is an organism that lives in or on another living organism, deriving nutrients from it. In this relationship the parasite benefits, but the organism being fed upon, the host, is harmed. The host is usually weakened by the parasite as it siphons resources the host would normally use to maintain itself. The **parasite, however, is unlikely to kill the host.** This is because the parasite needs the host to complete its reproductive cycle by spreading to another host.

The reproductive cycles of parasites are often very complex, sometimes requiring more than one host species. A tapeworm is a parasite that causes disease in humans when contaminated, undercooked meat such as pork, fish, or beef is consumed. **The tapeworm can live inside the intestine of the host for several years,** benefiting from the food the host is bringing into its gut by eating. The parasite moves from species to species as it requires two hosts to complete its life cycle.

4) Within biological communities, some species are important in determining the ability of a large number of other species to persist in the community. Such species are called

- a) Sympatric species
- b) Keystone species
- c) Allopatric species
- d) Threatened species

Solution: b)

A **keystone species** is a species which has a disproportionately large effect on its natural environment relative to its abundance.

Keystone species play a critical role in maintaining the structure of an ecological community, affecting many other organisms in an ecosystem and helping to determine the types and numbers of various other species in the community.

5) Consider the following statements.

1. An ecological niche is the unique functional role or place of a species in an ecosystem.
2. The knowledge about the niche requirements of the species is important if we have to conserve species in its native habitat.
3. No two species have exact identical niches.

Which of the above statements is/are correct?

- a) 1, 2
- b) 1, 3
- c) 2, 3
- d) 1, 2, 3

Solution: d)

A niche is the unique functional role or place of a species in an ecosystem. It is a description of all the biological, physical and chemical factors that a species needs to survive, stay healthy and reproduce.

A niche is unique for a species, which means **no two species have exact identical niches**. Niche plays an important role in conservation of organisms.

If we have to conserve species in its native habitat we should have knowledge about the niche requirements of the species and should ensure that all requirements of its niche are fulfilled.

6) Consider the following statements regarding Syngas.

1. It is a mixture comprising of carbon monoxide, carbon dioxide, and hydrogen.
2. Syngas is combustible and can be used as a fuel of internal combustion engine.
3. It has twice the energy density of natural gas.

Which of the above statements is/are correct?

- a) 1 only
- b) 1, 2
- c) 1, 3
- d) 2, 3

Solution: b)

Syngas, or synthesis gas, is a fuel gas mixture consisting primarily of hydrogen, carbon monoxide, and very often some carbon dioxide. The name comes from its use as intermediates in creating synthetic natural gas (SNG) and for producing ammonia or methanol. **Syngas is combustible and can be used as a fuel of internal combustion engines.** However, **it has less than half the energy density of natural gas.**

Syngas can be produced from many sources, including natural gas, coal, biomass, or virtually any hydrocarbon feedstock, by reaction with steam (steam reforming), carbon dioxide (dry reforming) or oxygen (partial oxidation). It is a crucial intermediate resource for production of hydrogen, ammonia, methanol, and synthetic hydrocarbon fuels.

7) Which of the following Geoengineering methods can be used to mitigate global warming?

1. Marine cloud brightening
2. Cirrus cloud thinning
3. Space reflectors
4. Stratospheric aerosol injection

Select the correct answer code:

- a) 1, 2, 3
- b) 1, 3, 4
- c) 2, 3, 4
- d) 1, 2, 3, 4

Solution: d)

Cirrus cloud thinning (CCT):

CCT is almost the opposite of marine cloud brightening. High-altitude Cirrus clouds are thin and wispy, so they don't reflect much solar radiation back into space, and instead trap long-wave radiation on earth. CCT proposes thinning them further through cloud seeding, letting more long-wave radiation escape.

Space reflectors:

Technologies like giant mirrors in space or umbrellas in orbit can be built to reflect sunlight away and keep the planet cooler.

Marine cloud brightening:

Another idea is to increase the Earth's 'albedo', which is the measure of amount of solar radiation the planet reflects back than it absorbs.

Stratospheric aerosol injection:

The idea is to simulate the cooling effects of volcanic eruptions, and enhancing the reflectivity of marine clouds.

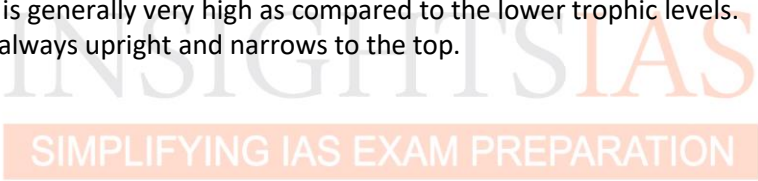
8) Consider the following statements.

- 1. The biomass in the upper trophic levels is generally very high as compared to the lower trophic levels.
- 2. The energy pyramid of an ecosystem is always upright and narrows to the top.

Which of the above statements is/are incorrect?

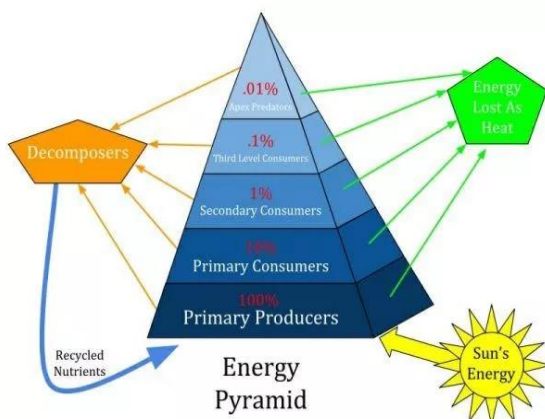
- a) 1 only
- b) 2 only
- c) Both 1 and 2
- d) Neither 1 nor 2

Solution: a)



Since each higher trophic level receives only a fraction of energy of the lower trophic levels, the **energy pyramid is narrow at the top**.

But, generally (barring some aquatic ecosystems) **lower trophic levels have higher biomass** as compared to the higher trophic levels.



9) Arrange the following ecosystems in the decreasing order of biomass productivity (g per metre square per year).

- 1. Coral reefs

2. Swamps and Marshes
3. Cultivated lands
4. Open ocean

Select the correct answer code:

- a) 2-1-4-3
- b) 1-2-3-4
- c) 2-1-3-4
- d) 1-2-4-3

Solution: c)

Producer	Biomass productivity (gC/m ² /yr)
Swamps and Marshes	2,500
Tropical rainforests	2,000
Coral reefs	2,000
Algal beds	2,000
River estuaries	1,800
Temperate forests	1,250
Cultivated lands	650
Tundras	140
Open ocean	125
Deserts	3

INSIGHTSIAS

10) Consider the following statements regarding Permaculture.

1. Permaculture integrates land, resources, people and the environment through mutually beneficial synergies.
2. It applies to water harvesting and hydrology, natural building, waste management and community development.
3. The philosophy behind permaculture is of working with, rather than against, nature.

Which of the above statements is/are correct?

- a) 1, 2
- b) 1, 3
- c) 2, 3
- d) 1, 2, 3

Solution: d)

Permaculture integrates land, resources, people and the environment through mutually beneficial synergies – imitating the no waste, closed loop systems seen in diverse natural systems. Permaculture studies and applies holistic solutions that are applicable in rural and urban contexts at any scale. It is a multidisciplinary **toolbox including agriculture, water harvesting and hydrology, energy, natural building, forestry, waste management, animal systems, aquaculture, appropriate technology, economics and community development.**

Permaculture (the word, coined by Bill Mollison), is the harmonious integration of landscape and people – providing their food, energy, shelter, and other material and non-material needs in a sustainable way.

The philosophy behind permaculture is of working with, rather than against, nature.